



# WEST VANCOUVER MEMORIAL LIBRARY **FACILITY SPACE PLAN**

May 13, 2022

**Urban**  
Arts  
Architecture Inc



## TABLE OF CONTENTS

1. Executive Summary of Public Consultations
2. Library Overview
3. Demographics
  - Population Statistics
  - Library Space/Capita
4. Vision
  - Library Trends
  - Stakeholder Engagement
  - Guiding Principles
5. Space Plan Concept Options
  - Overview and Key Strategies
  - Illustrative Concept Options
  - Meeting the Vision - Summary Matrix

## LAND ACKNOWLEDGMENT

*With profound gratitude and respect, we acknowledge that the West Vancouver Memorial Library is located on the (unceded) lands of the Coast Salish Peoples of the Skwxwú7mesh [pronounced Skohomish] (Squamish), Tsleil-Waututh [pronounced slay-wa-tooth], Musqueam, shíshálh (Sechelt), and Líl'wat Nations, whose historical relationships with the land continue to this day.*

*"I have always imagined that Paradise will be a kind of library."*

*Jorge Luis Borges*

# EXECUTIVE SUMMARY OF PUBLIC CONSULTATIONS

## GOAL:

Work together to create a vision and space plan for a West Vancouver Memorial Library (WVML) within the existing footprint that responds to the evolving Library services.

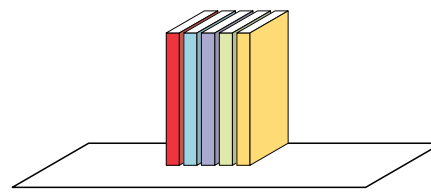
## CONTEXT:

As we all emerge from lives restrained by Covid, the WVML is creating a new Space Plan exploring community connectivity, Library services and partnerships.

West Vancouver experienced a growth of approximately 3.9% in the last five years. The community is densifying with Village of Ambleside experiencing population growth of 7.9% between 2016 - 2021. During the last ten years, library visits have steadily increased, programs have expanded and the patterns of library use have changed.

## SCOPE OF WORK

The development of the Space Plan included five phases as noted in the diagram below. This report summarizes all phases of the project.



## SHORT STORIES

During the stakeholder engagement, it was observed that the Library spaces act as an anthology of short stories - **tangentially linked** together rather than as novel with cohesive chapters.

The general sense was that retaining the character of the space as distinct short stories while **intentionally linking** them would lead to success.

## STAKEHOLDER ENGAGEMENT

Working closely with the WVML, Urban Arts Architecture (UAA) completed an extensive stakeholder engagement process to create the vision and concept design for a reinvigorated Library. Between September and November 2021, stakeholder engagement included 3 workshops, staff interviews, and an online survey.

Working collaboratively with staff, patrons and community partners, we identified needs, shared current trends in Library design and created a vision, building upon success.

## KEY TAKE-AWAY SUMMARY

From the stakeholder engagement, the key take-aways are as follows:

1. The Library is well loved and the mid-century wing is highly valued.
2. There is a strong sense of community; and creating spaces to support ongoing partnerships is essential, particularly post-COVID.
3. Lower level Community Computing Centre and the Welsh Hall require a major refresh.
4. Wayfinding is problematic throughout the Library with lack of connectivity between the spaces.
5. South block mezzanine is particularly isolated due to the level change and needs to be better integrated visually and programatically.

## VISION

The Vision was derived from the stakeholder engagement and is summarized as follows:

- Make space for people, programs and events while retaining the breadth of the collection;
- Refresh the Lower Level rethinking the Welsh Hall and adding creative spaces; and
- Improve connectivity, visibility and intuitive wayfinding throughout the Library.

## GUIDING PRINCIPLES

The following thirteen Guiding Principles were established from the engagement process:

1. Maintain community atmosphere and sensibility
2. Honour the history and reflect community diversity
3. Inclusive + accessible for all
4. Weave indigenous values throughout the library
5. Integrate wayfinding
6. Enhance indoor/outdoor connectivity
7. Maintain the integrity of the collections
8. Make and maintain safe spaces
9. Add flexibility
10. Expand art, music and performance spaces
11. Provide open space for social connectivity
12. Include a variety of seating options
13. Integrate technology throughout the library.

## PROGRAM

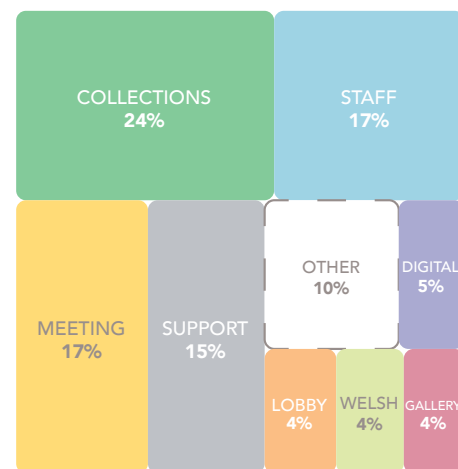
Many of the Library spaces are currently right sized for their functions. The seminal shift will be in understanding spaces as flexible with the uses changing daily, weekly and seasonally!

Significant changes to size of spaces as follows:

- The Welsh Hall area and the meeting spaces will increase.
- Support and circulation spaces will decrease to free up meeting space area.
- The collection size will be maintained and can grow another 2 - 4%. Collection display area is decreased to increase accessibility and visibility. This is augmented by additional compact storage at the Basement.

All space changes are within the existing building footprint, except as noted below:

- A portion of the second floor over the Main Level East Wing Gallery will be infilled creating additional area at the East Wing upper level and improving lighting and display in the Gallery concourse on the Main Level.
- One concept option explores infilling the courtyard to create a light filled community hub.



PROGRAM SUMMARY DIAGRAM  
NET AREA: 50,031 sq ft

## CONCEPT DESIGN

The key characteristic of the Space Plan is to provide flexibility in implementation. Key strategies were developed to address the vision and to meet the programmatic requirements.

**The strategies represent discrete short stories that can be mix and matched and implemented over time.**

1. **Enhance the Main Hall:** Building on the success of the community living room space, expand connectivity to all other areas, add adaptable space for performances, and revitalize the Gallery.
2. **Inhabit the mezzanine:** Knit into the Library through connectivity, increased visibility and meeting/booth spaces.
3. **Increase Use of Courtyard** by enclosing the space to create a vibrant sky-lit atrium and/or rethinking adjacent uses for more indoor/outdoor connectivity.
4. **Support the Youth:** Establish patterns early! Rethink the Youth Area, expanding the size (by relocating or infilling) to add play-based learning and provide purposeful areas for different ages.
5. **Provide a variety of flexible collaborative/study spaces:** Add meeting rooms, booths & expand seating options.
6. **Rethink Collections:** Reduce stack height and implement minimum 4'-0" aisle width, particularly in the Mezzanine area to facilitate accessibility, and to create safe and visible spaces. This will result in approximately 10% less collections on display. To retain the diversity and breadth of the collection, expand the compact storage system.

7. **Refresh the Lower Level:** Relocate the Welsh Hall to connect to nature and add foyer. Expand digital services by adding a recording studio, Fabrication space and individual call rooms.

8. **Increase Staff Efficiency** through a new Welcome Desk, expanded area around the Automated Material Handling System (AMH), consolidated offices and workstations in the lower level staff area and enhanced break area and staff lounge.

9. **Weave Indigenous design throughout the Library:** Collaborate with the Squamish Host Nation to explore art, signage/wayfinding, collections, gathering spaces and connection to the Land. Create a plan for ongoing connection and reconciliation.

Two illustrative concept design options are presented as sample configurations with all interventions being modular.

Option 1 retains the courtyard and explores relocating the Youth to the West Wing, bringing energy to the Main Level and using the existing courtyard as an exterior play area.

Option 2 encloses the courtyard to create a vibrant Hub - a sky-lit Atrium connecting the North Block, South Block Mezzanine and the West Wing.

# LIBRARY OVERVIEW

## SITE INFORMATION



**Address:** 1950 Marine Dr,  
West Vancouver, BC V7V 1J8

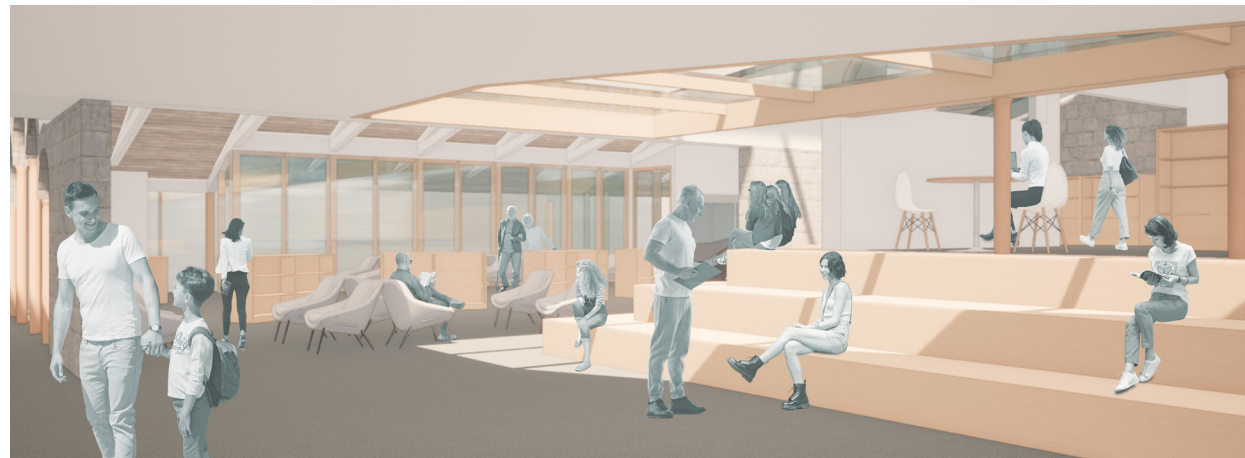
**Community:** Dundarave/Ambleside

**Gross Building Area:** 5,143 m<sup>2</sup> ( 55,359 ft<sup>2</sup> )

**Year Built by Block:**

N - 1950, S - 1957 & 1962, W - 1977 & 2016, E - 1993

**Description:** The West Vancouver Memorial Library (WVML) was built to honour World War II soldiers. For over seventy years, the Library has become a welcoming and cherished community home for all ages. There have been seven major expansion/renovations to facilitate the community's growth, resulting in a Library that is comprised of six levels in three wings. The entry and heart of the building is located in the original North Block and still reflects and defines the character of the facility.



View of new Atrium looking north connecting the Heritage Main Level, Mezzanine and West Wing.

## NEXT STEPS

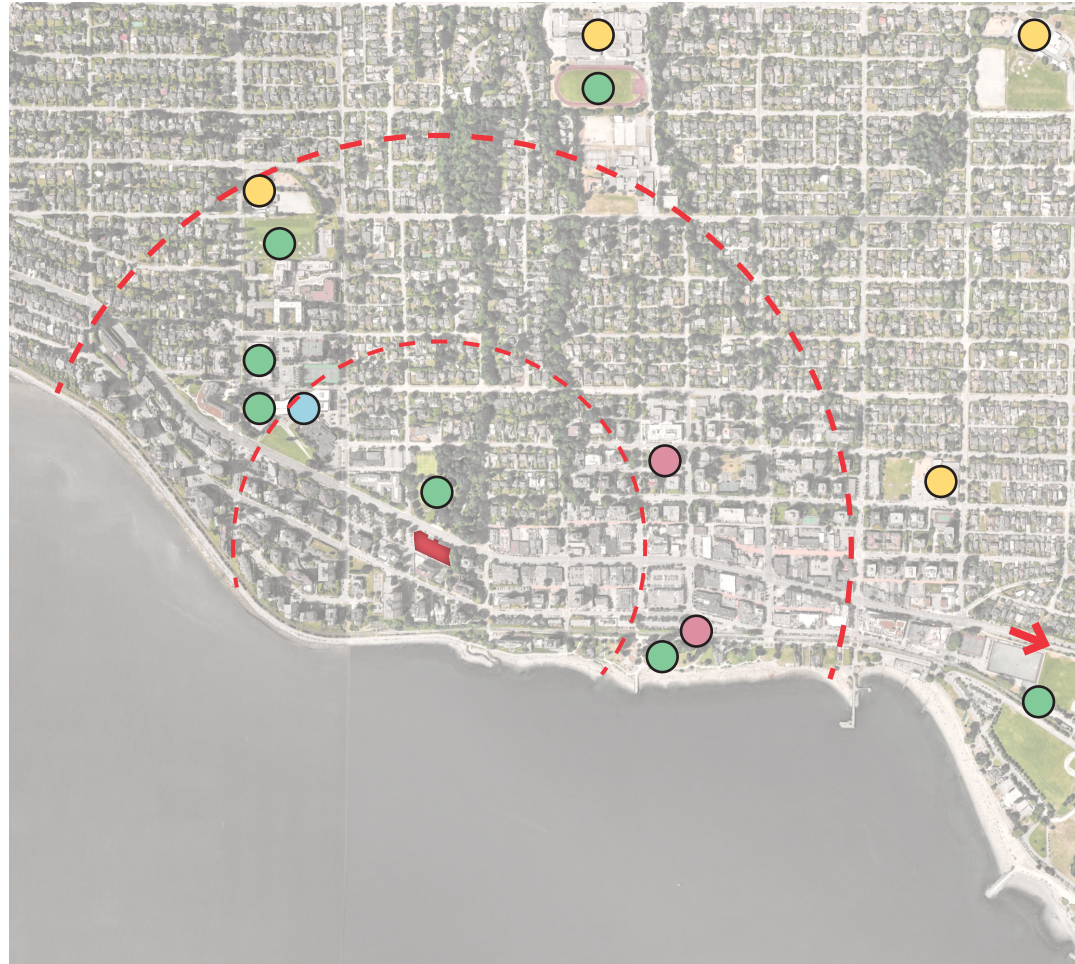
The Space Plan has been designed to allow different areas to be developed independently, making it a flexible and fluid tool that responds to the patrons' evolving needs.

The WVML will be sharing the Space Plan with staff, community partners and workshop participants. The intent is to share with all Library patrons in August - September 2022. The WVML will also develop a list of priorities based on the key strategies.

The next step to complete the vision is to undertake the engagement with the Squamish Nation. This essential engagement will further inform the path to reconciliation.

The WVML staff and board can then undertake a workshop establishing priorities in alignment with the Vision and coordinate with the District's ongoing maintenance and capital improvement plans.

## COMMUNITY CONNECTIVITY



The Library is well located in the heart of West Vancouver between the villages of Ambleside and Dunderave.

The context diagram illustrates the Library location and proximity to community amenities, within a 5 minute and 10 minute walk.

The West Vancouver Community Centre is located within a 5 minute walk, and downtown Ambleside is within a 10 minute walk providing strong community connectivity.

- 5 min Walking Radius
- 10 min Walking Radius
- Commercial Centre
- Arts & Culture
- Primary & Secondary
- Community
- Parks & Rec.



### WALKABILITY

Walk Score: 75 - Very Walkable  
Time to Park Royal Shopping Centre: 25 min



### CYCLE

Bike Score: 64 - Bikeable  
Bike Parking: Yes  
Time to Park Royal Shopping Centre: 6 min



### TRANSIT

Transit Score: 52 - Good Transit  
Bus Routes: #250, 253, 255, 256  
Time to Park Royal Shopping Centre: 5 min



### DRIVING

Parking: free parking in lot and street, availability and time is limited.  
Time to Park Royal Shopping Centre: 5 min

## BUILDING ORGANIZATION

The building includes four major volumes or wings.

### 1. NORTH BLOCK

The one storey North Block contains the entrance lobby, staff services, and Cafe. Defined by the expressive wood ceiling structure, original stone and arched connection to the West Wing, this space is the central gathering and welcome area.

It has direct connection to all wings with a stair connecting to the upper mezzanine area. A small courtyard brings nature into the heart of the building and is accessed from the North Block and the West Wing.

An elevator provides accessible access to all levels.

### 2. SOUTH BLOCK

The south block mezzanine is 1/2 level above the North Block. Visual connection to the other wings is very limited. Additional small stairways connect the mezzanine with the east and west blocks. The lower level contains staff areas and is not accessible to the public.

The space is defined by the vaulted ceilings, expressive wood trusses and clerestory windows. Dropped mechanical ducts, high stacks and lighting limit the sense of the space.

### 3. WEST WING

The west wing was renovated in 2016. The one storey wing is located beneath the parking lot. The space currently houses the non-fiction collection, Accessible Services and staff offices. Spatial characteristics include round "occupied" columns, western linear skylight and connectivity to the courtyard. The space is defined by clean modern ceiling with dropped acoustic wood treatment in the lounge area.



# DEMOGRAPHICS

East Wing – Children’s Area



North Block – Entrance Lobby



South Block – Main Mezzanine



West Wing – Collections



## 4. EAST WING

Constructed in 1993, the East Wing includes 4 levels and the elevator and vertical circulation.

Located east of the North Block and the South Block, this wing overlooks the creek to the east and Marine Drive to the North. There are some views of the water to the south.

- The Main Level contains the Peters Lounge, Gallery and Adult Fiction, meeting rooms and offices.
- The Upper Level contains the Youth Department with a bridge connection overlooking the Gallery space below.
- The Lower Level contains the Community Computing Centre and Welsh Hall.
- The Basement houses the staff office area and storage.

The East Wing has a poured in place concrete structure and a sawtooth roof with clerestory windows on the upper floor. The staggered floor plan facilitates some connectivity to the creek area to the east.

The enclosed elevator and circulation stair is located within a concrete shear wall structure and is not inviting.

The upper level overlooks the Gallery below providing sectional connectivity. However, the access route from the elevator is quite limited.

The lower level has limited connectivity to the rest of the Library. The Welsh Hall is very difficult to use as a column is located in the centre of the space limiting visibility.

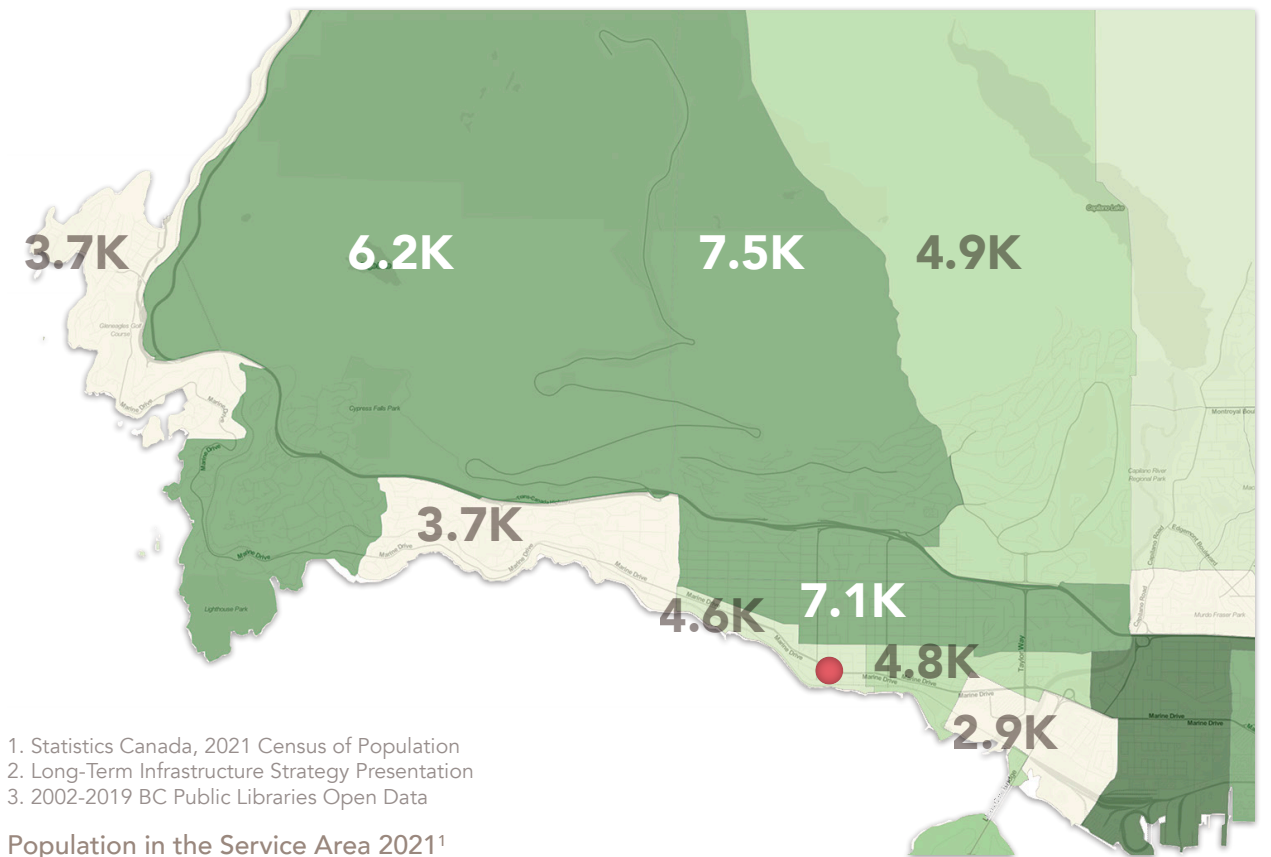
West Vancouver experienced a growth of approximately 3.9% between 2016 - 2021. The community is densifying with Village of Ambleside experiencing population growth of 7.9% between 2016 - 2021.

During the last ten years, library visits have steadily increased, programs have expanded and the patterns of library use have changed.

The population of West Vancouver has increased by an average of 0.8% per annum from 2016 to 2021, growing from 42,473 to 44,122 in 2021<sup>1</sup>, for an increase of approximately 3.9%. Other comparable Lower Mainland areas experienced fluctuating growth ranging from approximately 9.7% in Surrey and 4.9% in the City of Vancouver.

As of 2016, visible minorities make up 36% of the population with Chinese and West Asian minorities accounting for most at 18% and 9% respectively. Chinese dialects and Farsi are the most spoken out of the 5% of non-official languages. 44% of residents are immigrants and 7% of those arrived in Canada between 2011 and 2016<sup>4</sup>.

According to Urban Futures, the population is expected to increase to 49,000 by 2031<sup>2</sup>.



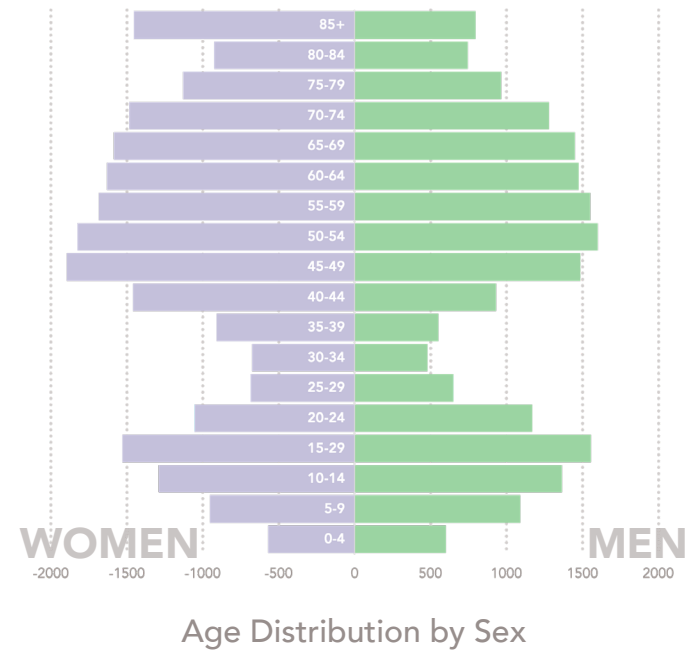
1. Statistics Canada, 2021 Census of Population  
 2. Long-Term Infrastructure Strategy Presentation  
 3. 2002-2019 BC Public Libraries Open Data

Population in the Service Area 2021<sup>1</sup>

West Vancouver has an older median age compared to other communities. The median age in West Vancouver is 50 years old. 28% of the population is over 65 years old. Adults between 25-44 only account for 15%<sup>4</sup>.

Affordability remains a challenge for the District with the average housing price at approximately \$2.6 Million in February 2022<sup>5</sup>.

High housing prices are resulting in families living in smaller units and increasingly depending on community amenity spaces for social connectivity.



## LIBRARY SPACE/CAPITA

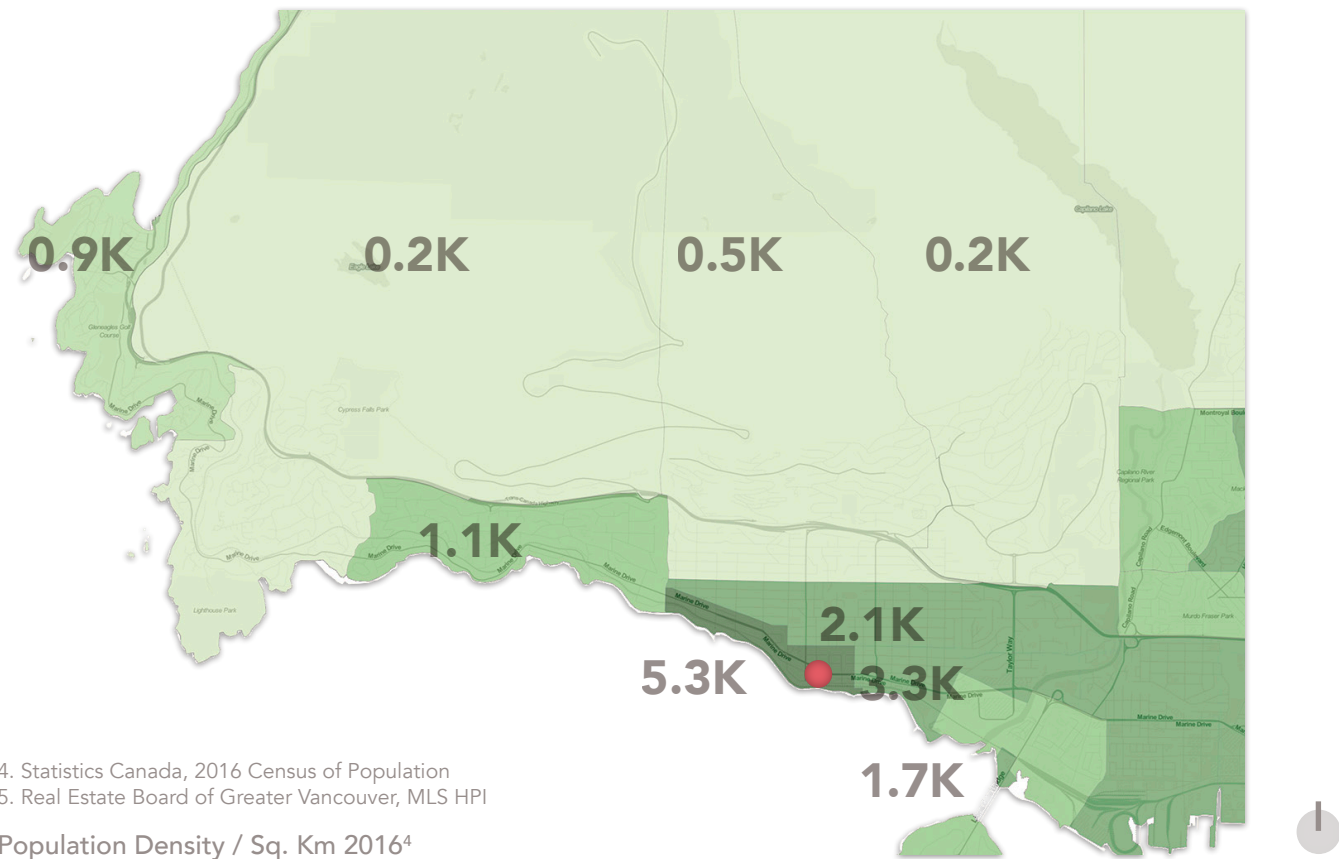
With a gross area of 55,359 ft<sup>2</sup>, WVML has an area of approximately 1.25 sq ft/capita. The complexity of the floor plan results in a larger net to gross area.

However, the existing WVML has adequate area to serve the population growth for the immediate future.

For a comparable, the City of Richmond has one of the most progressive library systems and standards across North America. Their standard is 1.0 sq ft/capita. The Ontario Public Library Association also uses a standard of 1.0 sq ft/capita.

With a projected growth rate to approximately 50,000 in 2030, the WVML will still have 1.10 sq ft/capita.

The WVML has adequate area to serve the population for the next 10-15 years.



4. Statistics Canada, 2016 Census of Population  
5. Real Estate Board of Greater Vancouver, MLS HPI



Christmas Concert, 2019 by @reeneharpist

# VISION

In West Vancouver, 55% of private residences are detached houses, compared to 44% in BC<sup>1</sup>. This value has been constantly decreasing since 1961<sup>2</sup>.

As living space becomes smaller, the library plays an important role as the living room of the city.



1. Statistics Canada  
 2. Housing - District of West Vancouver  
 3. WVML Business Plan 2021  
 4. 2002-2019 BC Public Libraries Open Data

## LIBRARY TRENDS TODAY

Libraries today relate to customers in exciting new ways, responding to and anticipating the ever-changing nature of information technology and media. More than a container for the collections, libraries have become a central part of the community as a place to learn, gather, create, and take shelter.

Current Library trends were shared with the board, staff and community partners as part of the Vision process.

With rising housing costs and global climate and health emergencies, the Library has become a home office, meeting place, play area and place of refuge. As a place of refuge, Library needs space and programs to address societal issues such as unemployment, inclusion, learning, and literacy. Key trends in Library design include:

### REFLECTIVE OF COMMUNITY AND PLACE

Provide spaces that are resilient and reflect the environment, tailor services to the unique needs of the community, and include a collection that supports local interest.

### A PLACE OF RECONCILIATION

Inclusive libraries are key community resources to promote reconciliation through collections, events, space design and naming.

### SUPPORT GATHERING

Libraries now function as public gathering places – the “Living Room of the Community” - egalitarian space for all.

### REDUCTION IN PHYSICAL COLLECTION SIZE

The WVML aims to “address the digital divide through innovative training and tech lending programs”<sup>3</sup>. The WVML circulated physical material 551,513 times<sup>4</sup>, however, the increased digital material presents an opportunity to convert spaces into people places!

### INCLUDE TECH ZONES + CREATION SPACES

Spaces for creative and digital use provide patrons with tools, access, and peer training to redefine and remake their world. Create spaces that:

- Foster play and exploration;
- Facilitate informal learning opportunities;
- Nurture peer-to-peer and active learning; and
- Establish partnerships with the community.

Expanding on the Community Computing Centre on the lower level, these spaces may include other resources such as recording studio, Fabrication Lab and individual videoconference rooms.

### PARTNERING WITH THE ARTS

The WVML has a long history of partnering with the arts to provide gallery events, concerts, and lectures. A key goal is to enhance the space for performance and display, and provide flexible community gathering spaces for a range of events.

### “ALONE TOGETHER”

Libraries today are multi-use facilities that balance traditional services with technology, or the exciting interactive uses with contemplative activities. Expand space for individual learning and relaxing and include:

- Flexible creation spaces including maker spaces, event space, group study, etc;
- Meeting spaces to support activities ranging from tutoring, book club, lectures, and talks;
- Promote connection by creating an open, accessible, user-friendly environment with flexible furniture that patrons can re-arrange.

### ALLEVIATE HEALTH & CLIMATE CONCERNS

The pandemic and changes in temperature have significantly and profoundly affected communities and the health and well-being of residents. Libraries play a key role as a place of shelter and learning as society grapples with our changing environment.

# STAKEHOLDER ENGAGEMENT



## STAKEHOLDER ENGAGEMENT



The engagement process was interactive, inclusive, online and in-person! Grounded in community engagement, the Space Plan was developed in the following key stages:

### 1. REVIEW OF THE EXISTING FACILITY:

UAA and the consultant team reviewed the space with senior library staff discussing functional and physical opportunities and constraints.

### 2. STAKEHOLDER ENGAGEMENT: EXPLORING CONNECTIVITY

The vision process included three workshops and five meetings as described below. All workshops commenced with a presentation of “Library Trends Today” to review current Library spaces, collection evolution and programs. Online interactive Stakeholder Engagement included the following:

#### 2.1 LIBRARY BOARD WORKSHOP

Key take-aways included:

- Build upon the Community Spirit;
- Aim to be more inclusive; and
- Integration of the South Block.

#### 2.2 STAFF WORKSHOP

Key take-aways included:

- Continue legacy of a creative place where people flourish;
- Connect to the natural world of West Vancouver;
- Maintain the heritage of the building.

### 2.3 COMMUNITY PARTNERS WORKSHOP

Working with the community partners, attendees explored the future of the library and opportunities for partnership.

The key observations around partnership included maintaining the significant role of the Library and strengthening partnerships with public and private organizations. The goal is to work together to deliver programs and be responsive to the changes in peoples preferences and abilities post-pandemic business community.

Refer to Appendix C for the Engagement Summary

### 2.4 STAFF INTERVIEWS

UAA held a series of in-person interviews with the staff to determine functional requirements for the Library. We explored staffing, collections, workflow, break-space, and ways of improving patron service.

### 2.5 SURVEY

An online survey was posted for six weeks with 124 responses. Refer to the Appendix for further detail.

From the stakeholder engagement, the following key take-aways and what's missing formed the foundation for the Space Plan Vision:

**KEY TAKE-AWAY SUMMARY**

1. The Library is well loved and the mid-century wing is highly valued, particularly the airport lounge and the cafe.
2. There is a strong sense of community and creating spaces to support ongoing partnerships is essential, particularly post-Covid.
3. Lower level Community Computing Centre and the Welsh Hall require a major refresh.
4. Wayfinding is problematic throughout the Library with lack of connectivity between the spaces.
5. South block mezzanine needs to be better integrated.

**WHAT'S MISSING?**

1. Variety of Seating.
2. Flexible Meeting and Study spaces - space for social connectivity!
3. Performance Areas to accommodate the well loved concerts.
4. Maker/Creation Space.
5. Indigenous and culturally welcoming spaces.
6. Connection to the natural world.



**VISION SUMMARY**

- Refresh the community-focused library by enhancing existing spaces, adding flexible gathering, reconfiguring the Welsh Hall and increasing visibility and connectivity between all floors.
- Examine the collection to enhance accessibility and to free up space for people "alone and together," better serving the community's need for exhibits, concerts, events and civic engagement.
- Ensure that flexible spaces for reflection and quiet study are also accommodated.

The word diagram below illustrates the WVML's key attributes that are highly valued by the community.



## GUIDING PRINCIPLES

The guiding principles for the space plan of the facility, that emerged from the workshop process, are as follows:

### 1. MAINTAIN COMMUNITY ATMOSPHERE AND SENSIBILITY

- Honour the heritage spaces while increasing connectivity between all wings;
- Extend the community home atmosphere of the North Block;
- Provide "Meet and Greet" at the entry to build community and connection;

### 2. HONOUR THE HISTORY AND REFLECT COMMUNITY DIVERSITY

- Create comfortable spaces for all;
- Include the languages of all peoples;
- Continue the legacy of the Memorial Library;

### 3. INCLUSIVE + ACCESSIBLE FOR ALL

- Enhance accessibility for all that goes beyond physical accessibility to include access to information, technology, and social experiences;
- Improve connectivity between the Library wings;
- Enhance access to collections;
- Provide a variety of spaces to support a spectrum of learning modalities and
- Provide additional gender neutral washrooms.

### 4. WEAVE INDIGENOUS VALUES THROUGHOUT THE LIBRARY

- Work with the Squamish Nation to understand a respectful way to honour and reflect their stewardship of the land;
- Incorporate local language;
- Examine the spaces and consider that they may be colonial and not welcoming for Indigenous Peoples;
- Set the library as an example of striving for reconciliation;
- Include Indigenous art; and

- Create spaces for sharing of stories and culture.

### 5. INTEGRATE WAYFINDING

- Provide intuitive signage that include colours and symbols for increased accessibility;
- Integrate Indigenous language;
- Use flooring and materials as visual cues;
- Rethink collections to flow more easily;
- Consider digital wayfinding; and
- Use intuitive layout of spaces to draw users into library.

### 6. INDOOR/OUTDOOR CONNECTIVITY

- Strengthen connection to natural world - put people by the windows;
- Build upon the success of the parking/plaza;
- Use the courtyard more effectively;
- Enhance presence of the library at the entry.

### 7. MAINTAIN THE INTEGRITY OF THE COLLECTIONS

- Include the depth and breadth of the collection while acknowledging reduction in some areas such as periodicals and AV;
- Improve accessibility for all to the collections area through the use of lower stacks, better lighting and accessible aisle widths.

### 8. MAKE SAFE SPACE

- Enhance visibility throughout the Library with clear sightlines and glazed partitions.

### 9. ADD FLEXIBILITY

- Include movable shelving;
- Enhance Main Hall for use as concert space and use sliding partitions in event spaces that to connect spaces.



Accessible for All



"I love the multigenerational (and inclusive) spaces"

Represent Local Cultures & Languages



Spaces for play for families that don't have spaces in their homes

Play-based Learning



Legible Wayfinding



"Bring outside in, smooth transition"

Outdoor Gathering Space



"Take advantage of West Van's natural beauty"

Indoor-Outdoor Connectivity



Comfortable Welcome Desk

**10. EXPAND ART, MUSIC AND PERFORMANCE SPACES**

- Highlight the library's continued focus on music related programs;
- Rethink Welsh Hall to expand uses;
- Reconfigure Main Hall to facilitate concerts and a better gallery environment with movable display walls and lighting;
- Develop a recording studio equipped to serve 5-8 users;
- Create an art program that celebrates collection and patrons through the space; and
- Consider a lending library of instruments and equipment available.

**11. OPEN SPACE FOR SOCIAL CONNECTIVITY**

- Build upon success of the music and concert series, civic events, forums;
- Rethink Welsh Hall and add foyer for mingling and receptions;
- Provide a variety of scale of meeting rooms (S, M, L) for videoconferencing calls, collaborative work, meetings or quiet study;
- Add more mobile pods/booths for semi-enclosed meeting spaces.

**12. VARIETY OF SEATING OPTIONS**

- Increase ergonomic, comfortable/informal seating for lounging - using the West Wing as a model;
- Provide tables/chairs with a variety of heights (sit-stand stations, bar height, table height, etc.);
- Consider platform/bleacher seating for gathering and informal presentations; and
- Include modular/mobile furnishing allowing patrons to create their own space!

**13. INTEGRATE TECHNOLOGY**

- Enhance access to digital connectivity within the Library and through programs;
- Add more power where possible;
- Add a recording studio;
- Explore adding a Fabrication Lab space;
- Make the Community Computing Centre more attractive, and welcoming for all ages;
- Incorporate technology to support collaboration and group work.



Food & Drink



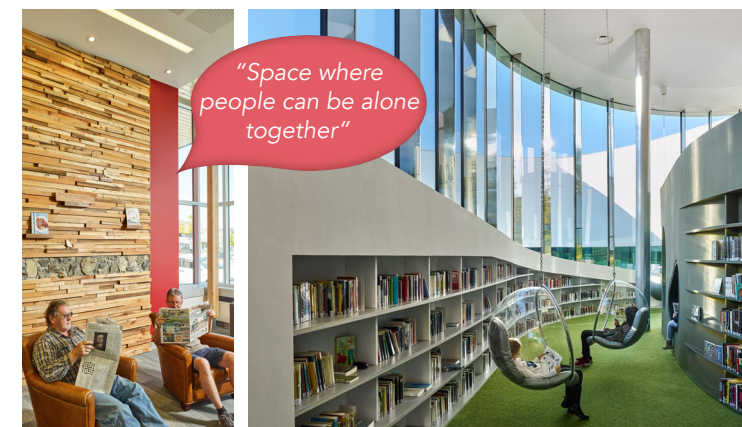
People in the Light

"Maintain the serendipity of browsing"



"Flexible interconnected multi-use space is important"

Interconnected Spaces



"Space where people can be alone together"

Diverse Spaces for All Ages



"Variety of seating options"

## PROGRAM SUMMARY

The Guiding Principles were used to examine the current spaces and consider their size, function and to identify what is missing, undersized or obsolete. This resulted in the development of a Program Space Matrix.

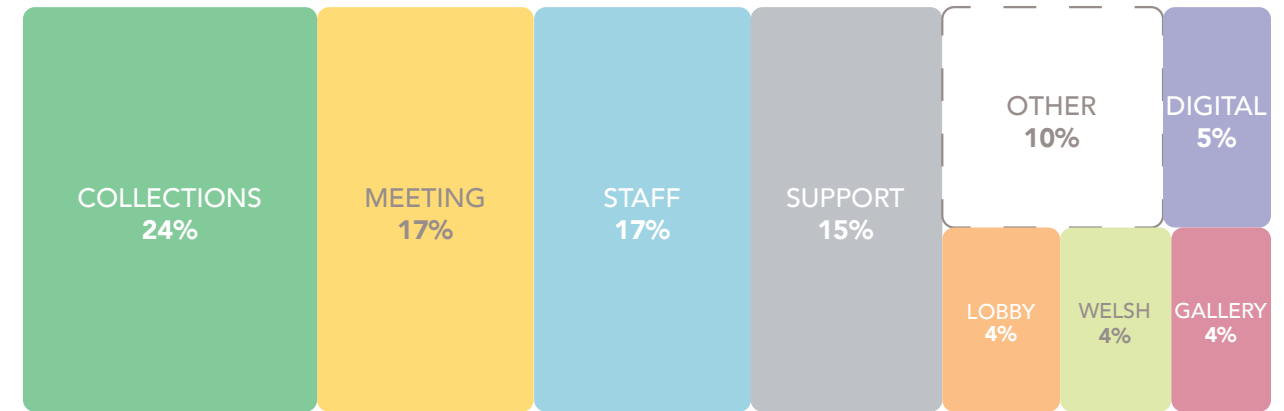
Many of the Library spaces are currently right sized for their functions. The seminal shift will be in understanding spaces as flexible with the uses changing over the course of the day.

Significant changes to area as follows:

- The Welsh Hall area and meeting spaces will increase.
- Support and flow spaces will decrease to free up meeting space area.

- The collection size will be maintained and can grow another 2 - 4%. Collection display area is decreased to increase accessibility and visibility. This is augmented by additional compact storage at the Lower Level.

Refer to the summary below and the Appendix for the detailed space matrix.



**NET AREA: 50,031 sq ft**

SPACE	DESCRIPTION	% OF GROSS AREA			LOUNGE & READ	SOCIAL SPACE	LEARN & PLAY	COLLABORATE	STUDY	DIGITAL LEARNING	CREATE/ DISPLAY
		EXISTING	PROPOSED								
<b>LOBBY</b>	Arrival Experience, Performance, Airport Lounge	4%	4%								
<b>MEETING</b>	Dedicated Gathering Spaces, Lounge and Study Areas	13%	17%	↑							
<b>WELSH HALL</b>	Flex Program Space	2%	4%	↑							
<b>GALLERY</b>	Display areas	2%	4%	↑							
<b>DIGITAL</b>	Places to Work and Learn	5%	5%								
<b>COLLECTIONS</b>	Browsing Areas	27%	24%	↓							
<b>STAFF</b>	Dedicated Staff Only Spaces	14%	17%	↑							
<b>SUPPORT</b>	Washrooms, Storage, Mechanical	18%	15%	↓							
<b>OTHER</b>	Circulation, Shafts, Walls	13%	10%	↓							

# CONCEPT DESIGN



The Space Plan has been developed to promote flexibility in its implementation. Key strategies address the vision and meet the programmatic requirements. These strategies represent discrete short stories that can be mix and matched and implemented over time.

## KEY STRATEGIES

- 1. Enhance the Main Hall:** Building on the success of the community living room space, expand connectivity to all other areas, add adaptable space for performances, and revitalize the Gallery.
- 2. Inhabit the Mezzanine:** Knit this underused area into the Library through connectivity, increased visibility and the addition of meeting/booth spaces.
- 3. Increase Use of Courtyard** by enclosing the space to create a vibrant sky-lit atrium and/or rethinking adjacent uses for more indoor/outdoor connectivity.
- 4. Support the Youth:** Establish patterns early! Rethink the Youth Area, expanding the size (by relocating or infilling) to add play-based learning and provide purposeful areas for different ages.
- 5. Provide a variety of flexible collaborative/study spaces:** Add meeting rooms, booths & expand seating options.
- 6. Rethink Collections:** Reduce stack height and implement minimum 4'-0" aisle width, particularly in the Mezzanine area to facilitate accessibility, and to create safe and visible spaces. This will result in approximately 10% less collections on display. To retain the diversity and breadth of the collection, expand the compact storage system.
- 7. Refresh the Lower Level:** Relocate the Welsh Hall to connect to nature and add foyer. Expand digital services by adding a recording studio, Fabrication space and individual call rooms.
- 8. Increase Staff Efficiency** through a new Welcome Desk, expanded area around the Automated Material Handling System (AMH), consolidated offices and workstations in the lower level staff area and enhanced break area and staff lounge.
- 9. Weave Indigenous design throughout the Library:** Collaborate with the Squamish Host Nation to explore art, signage/wayfinding, collections, gathering spaces and connection to the Land. Create a plan for ongoing connection and reconciliation.



*We really appreciate being able to gather diverse members of the community for conversations and civic engagement challenging conversations"*



**1. Enhance the Main Hall:** Building on the success of the space, opening to the courtyard/hub, and creating an adaptable space for performances.

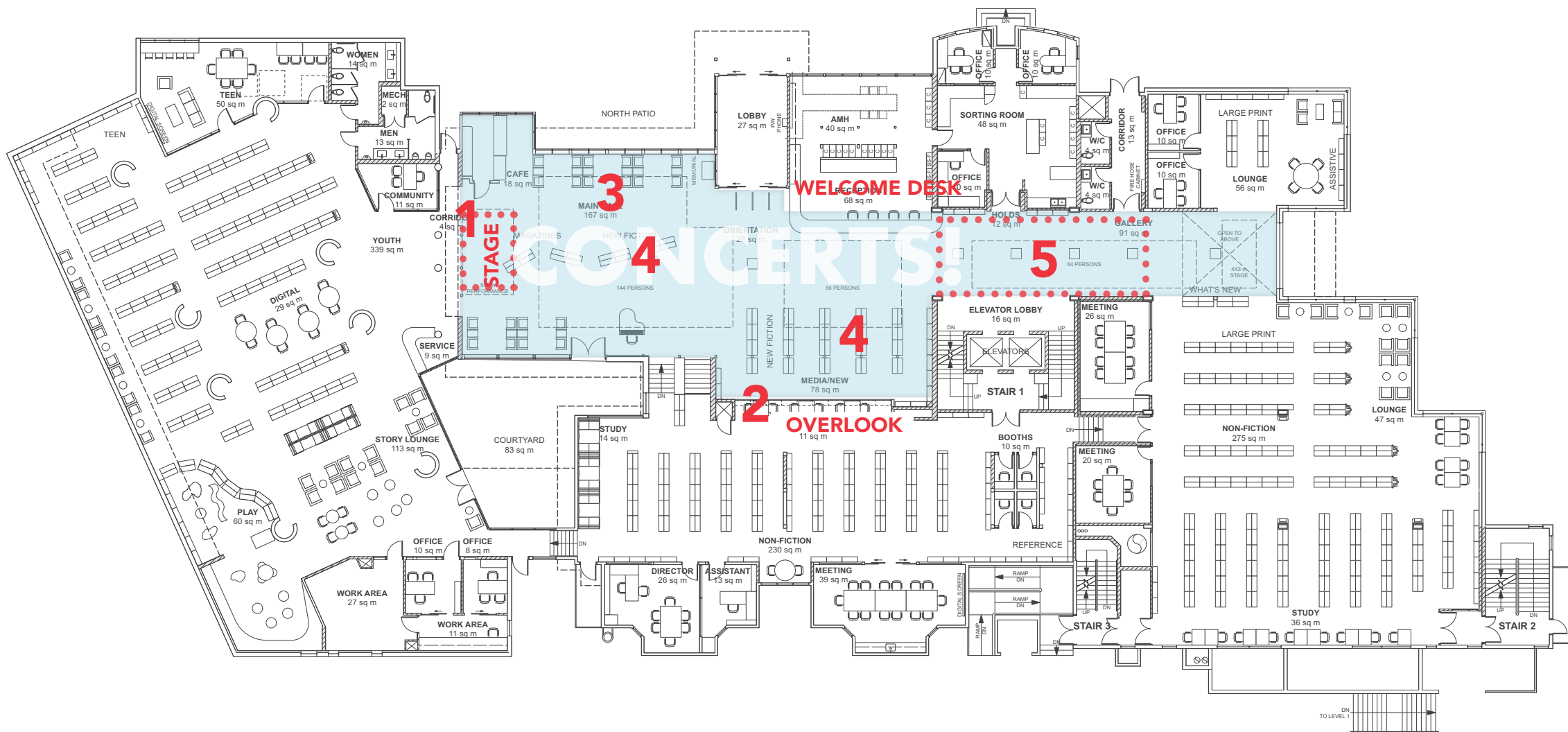
**ENHANCE THE COMMUNITY LIVING ROOM WITH THE FOLLOWING KEY STRATEGIES:**

1. Relocate the performance/stage area to the west end in front of the heritage arches. Add theatrical lighting and a sound system to support this area.
2. Expand connectivity throughout the Library by opening up to the mezzanine.

*Option 1- Create an Overlook by opening up the area above the "what's hot" area.*

*Option 2: Add selected openings for partial views. This may be combined with the relocated service desk.*

3. Refresh the airport lounge with new furniture and lighting. Add cafe/bistro seating to support the cafe.
4. Add movable stacks for What's Hot!
5. Infill a portion of the double height volume to create expanded space above, and adding theatrical lighting featuring a new stage area at the west end of the North Block.



**2. Inhabit the mezzanine:** Knit this space into the Library through connectivity, increased visibility and adding meeting and booth spaces.



Option 1: Glazed overlook to the mezzanine above the "What's Hot" area.



Option 2: Porthole views to the mezzanine above a relocated Welcome Desk

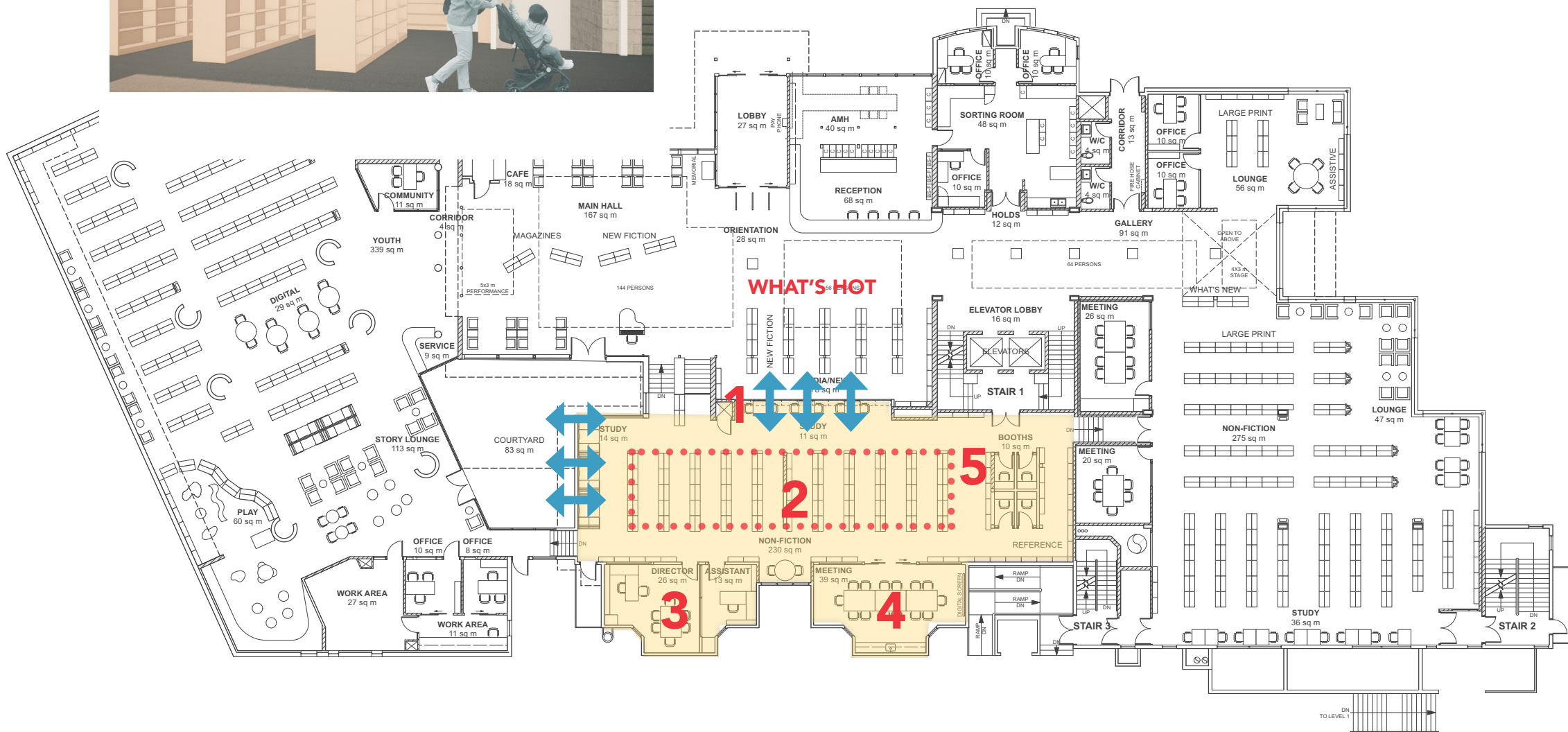
**INCREASE CONNECTIVITY AND VISIBILITY THROUGH THE FOLLOWING KEY STRATEGIES:**

1. Add an overlook to the North Block.

Option 1: Create an Overlook by opening up the area above the "what's hot" area.

Option 2: Add selected openings for partial views. Open the west side to an enclosed courtyard area and add bleachers for informal gathering, performances etc. Refer to Courtyard section for further detail.

2. Lower the stacks and replace the lighting to increase visibility and highlight the vaulted ceilings, wood trusses, clerestory windows that define the modernist space.
3. Add Directors Office in southwest collections room, adding eyes on the space.
4. Add meeting room in the southeast collection room.
5. Add individual videoconferencing booths at the east end near the reference collection.



### 3. Increase Use of Courtyard

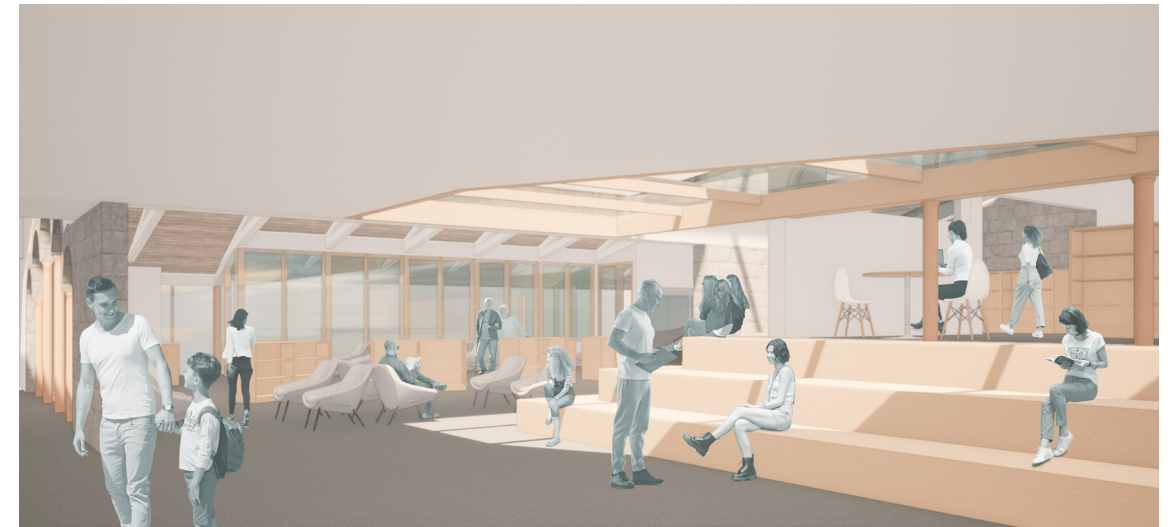
by enclosing the space to create a vibrant sky-lit atrium and/or rethinking adjacent uses for more indoor/outdoor connectivity.

*Option 1: Rethink Adjacent Uses:*

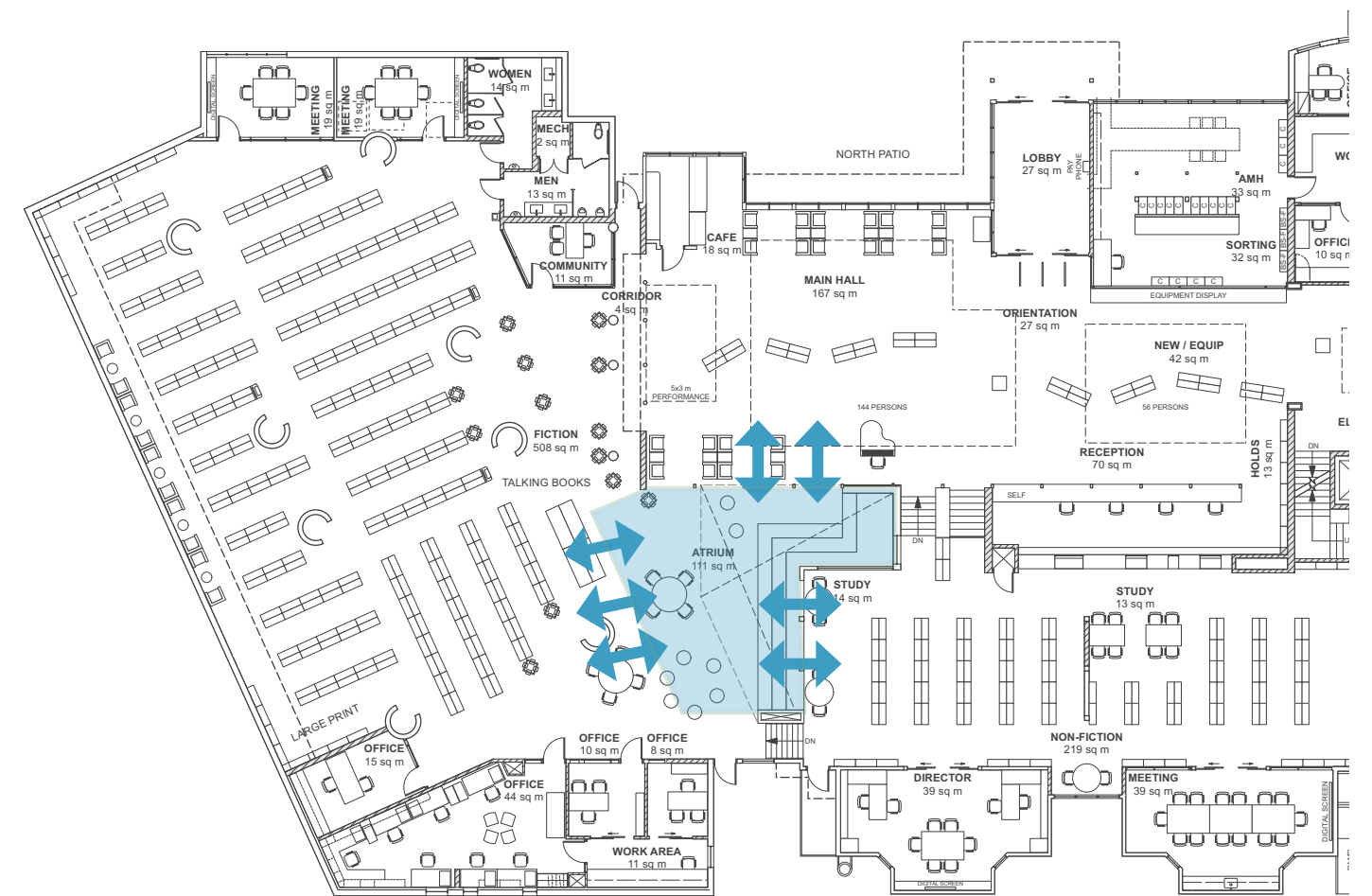
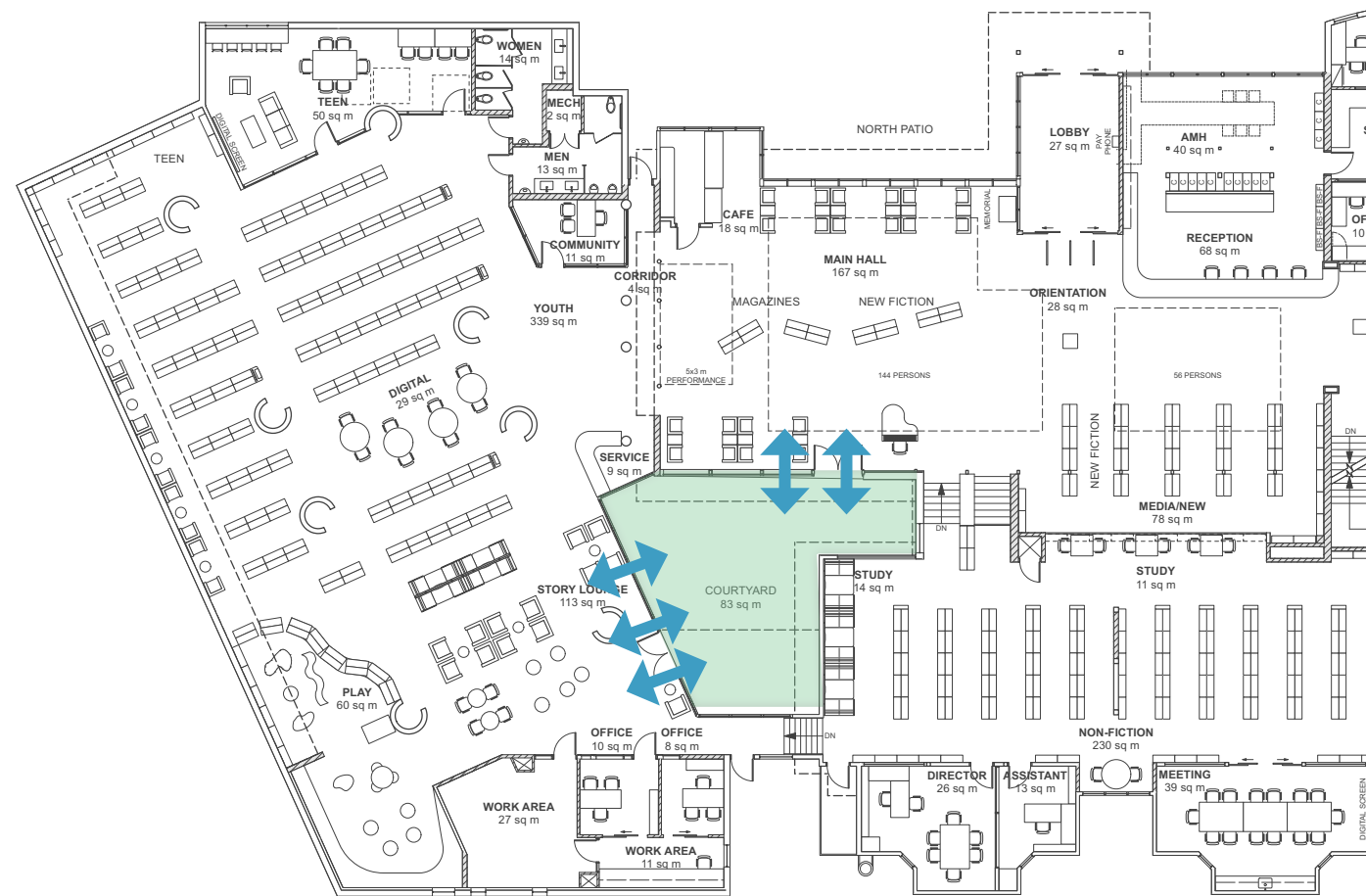
1. Increase use of Courtyard and connectivity to nature by relocating Youth Library to the Main Floor. Add an exterior play/story time area in the courtyard.
2. Provide connection to the upper rooftop garden with new accessible lift located in the courtyard.

*Option 2: Enclose the courtyard to create an Atrium.*

1. Enclose courtyard with a new glazed roof to create a vibrant community hub at the centre of the Library that connects the North Block, West Wing and Mezzanine.
2. Provide bleachers to the mezzanine.
3. Provide connection to the upper rooftop garden with new accessible lift located in the courtyard.



Option 2: View of Atrium from West Wing looking north to the Heritage Main Level access to mezzanine via the bleachers.

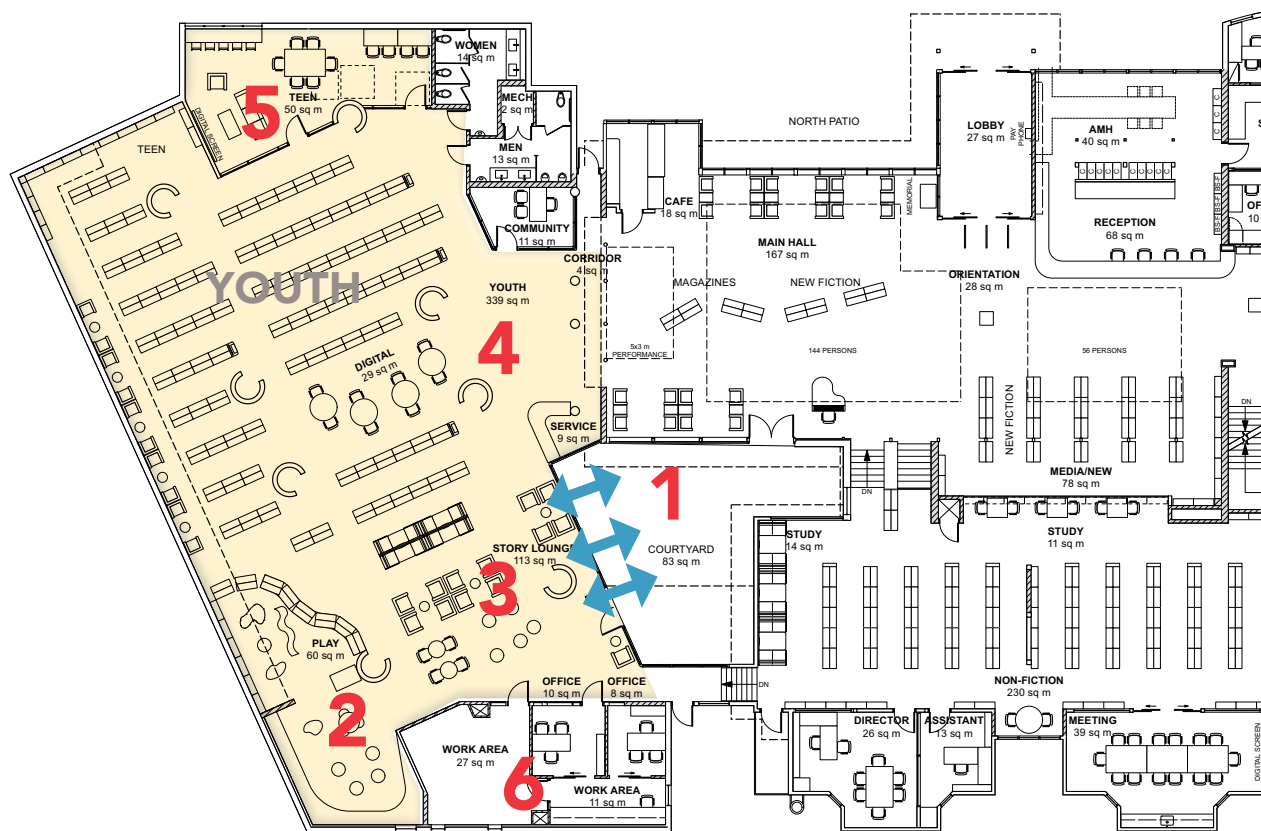


## 4. Support the Youth: Establishing patterns early! Rethink the Youth Area, expanding the size (by relocating or infilling) to add play based learning and provide areas for different ages.

Option 1: Relocate Youth to the West Wing to increase accessibility and make better use of the courtyard.

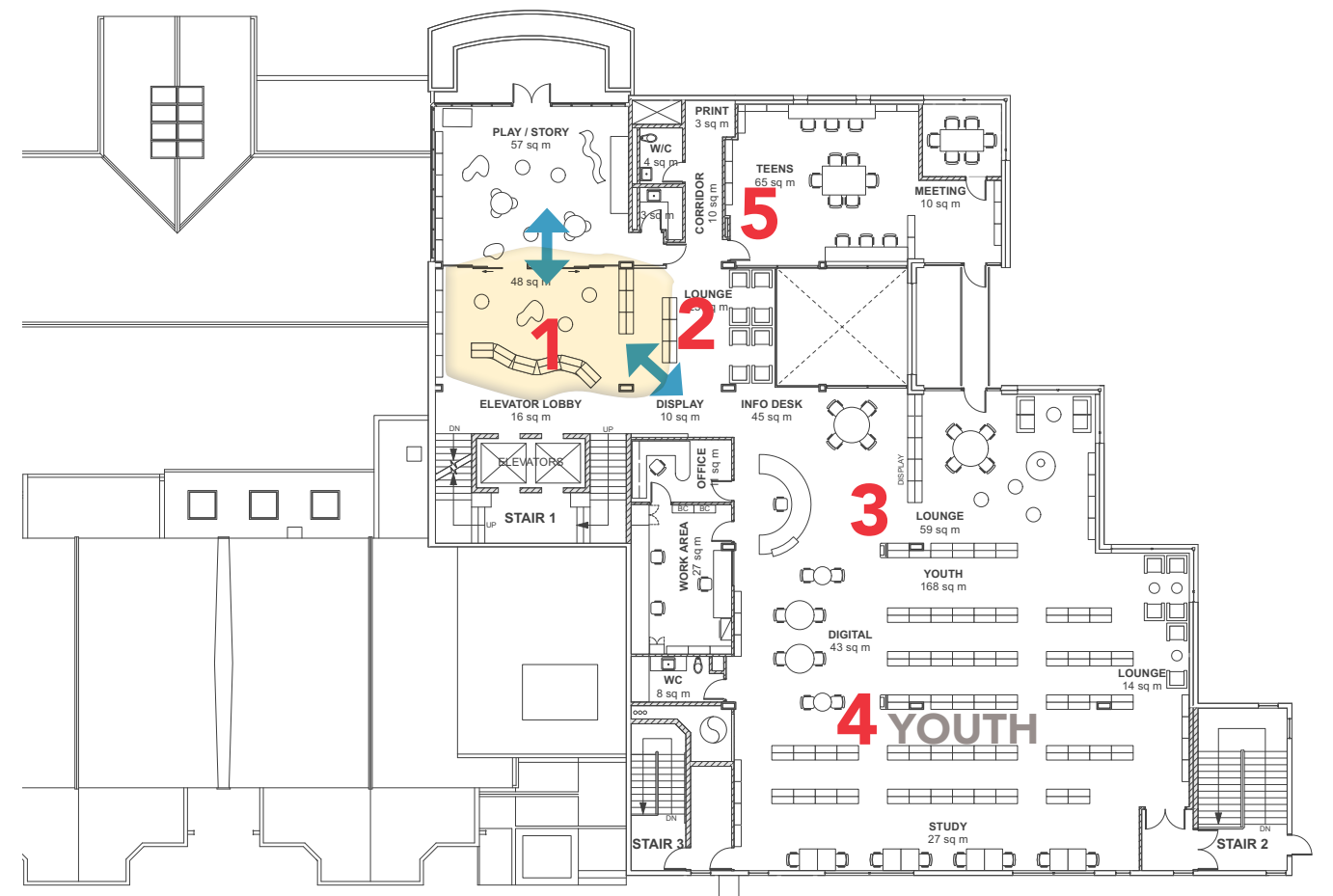
1. Add an exterior play/story time area in the courtyard.
2. Create a play-based and sensory learning space in the southwest corner, taking advantage of the reduced height to create a cozy corner.

3. Transform the lounge area into a parent lounge zone. Include flexible area for story time.
4. Add discovery play areas inside the columns.
5. Relocate Teens to north side and add additional study space.
6. Reuse offices for Children's Librarian and programming.



Option 2: Infill Floor area to increase Youth area at the existing space on the 2nd Floor .

1. Infill floor area to expand Story House add play-based learning zone, and create a more gracious and safe entry.
2. Add lounge and seating areas at the windows and overlooking the Atrium.
3. Reorganize the current play zone to provide parent-child reading space by the windows.
4. Reorient the stacks to align with the clerestory windows.
5. Retain Teen area as is.



## 5. Provide a variety of flexible collaborative/ study spaces: Add meeting rooms, booths & expand seating options.

Locate a variety of gathering spaces on all levels to meet a variety of needs. Increase total seating capacity by approximately 23% as follows:

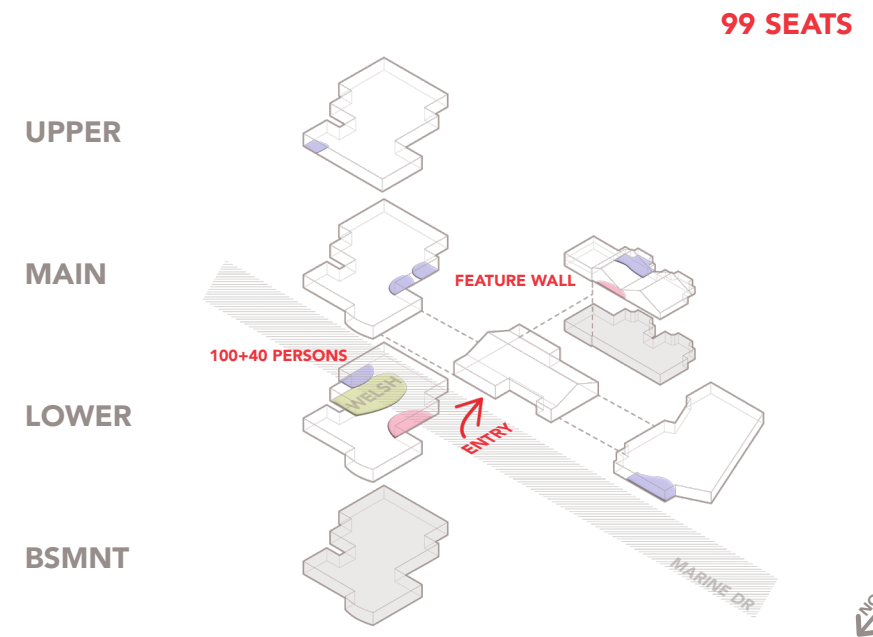
1. BCBC Occupant capacity of Welsh Hall is expanded from 143 persons to 207 by expanding to adjacent foyer for receptions before and after events.
2. Meeting rooms and informal booths have doubled from 44 to 99
3. Informal seating (lounge and study spaces) to be expanded from 337 to 350.

The diagrams to the right illustrate the proposed distribution of gathering spaces throughout the levels of the Library.

### OCCUPANCY AND SEAT COUNTS

	WELSH HALL + CRUSH	MEETING/ BOOTHS	INFORMAL SEATING	TOTAL
EXISTING	143	44	337	524
PROPOSED	207	99	350	656

### MEETING ROOMS & BOOTHS



### INFORMAL SEATING



## 6. Rethink Collections

The WVML has an extensive and highly valued collection with a generous acquisitions budget. Though the WVML is constantly reviewing and editing the collection, there is continued growth.

During the staff workshop, we took the "temperature" and had further discussions to understand how collections are evolving. Change was summarized as follows:

- Adult Fiction: Minimal growth
- Adult Non-Fiction: Moderate reduction
- Children's (Youth): Minimal growth
- Periodicals: Significant reduction
- Audio-Visual: Significant reduction

The staff and patrons acknowledged that the collection is a "destination collection" with visitors from Lower Mainland coming to the Library to access the collection. The challenge will be to continue the legacy of a great collection while creating space for the desired programs.

For reference, the Ontario Public Library guidelines recommend 2-3 items per capita. WVML offers 4 items per capita.

It is also essential to continue to improve accessibility to the collection - physically and digitally. Within the physical space, all collection areas will aim to have minimum 1220 mm width aisles to facilitate access by persons using wheelchairs. Where possible, the height of shelving can also be reduced, as the bottom shelf and the top shelf are difficult to access for persons with mobility concerns.

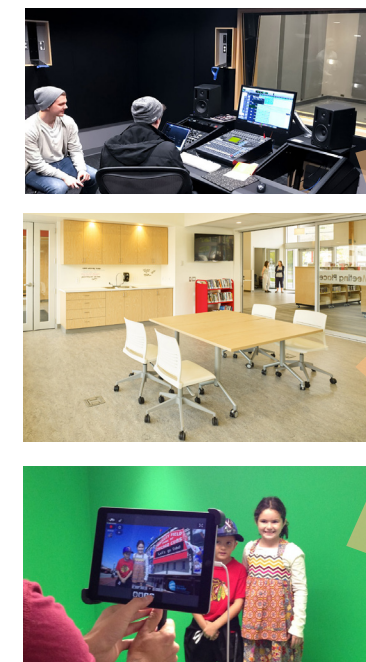
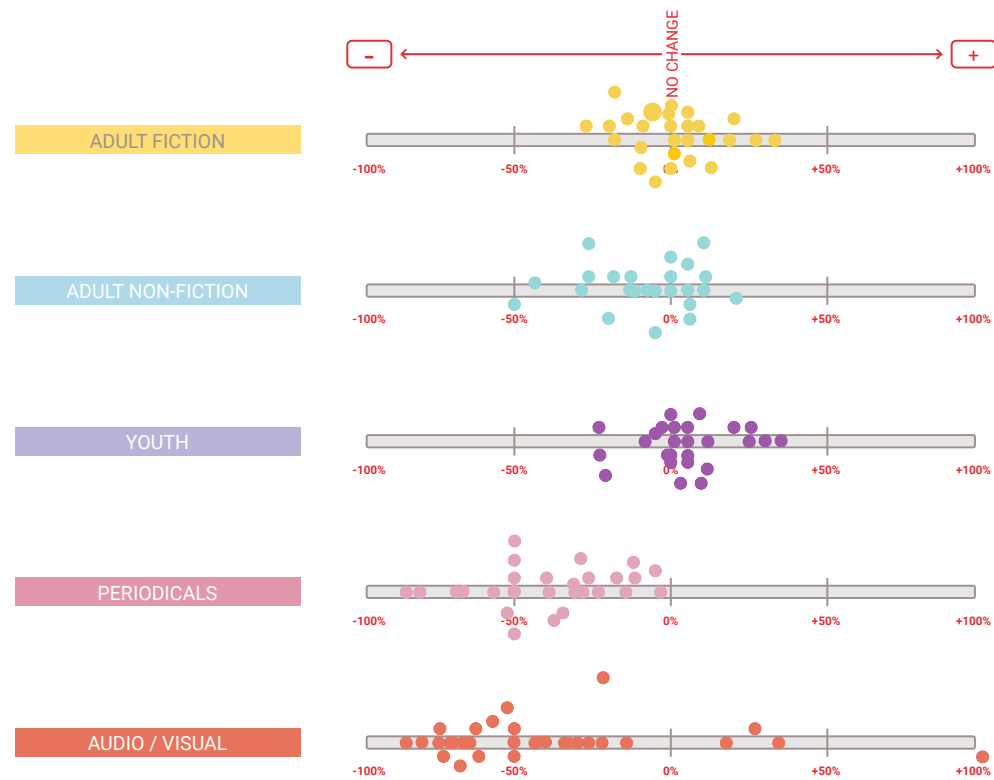
### RECOMMENDATION

Reduce stack height and implement minimum 4'-0" aisle width, particularly in the Mezzanine area to facilitate accessibility, and to create safe and visible spaces. This will result in approximately 10% less collections on display.

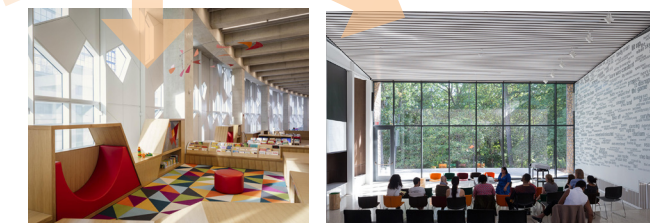
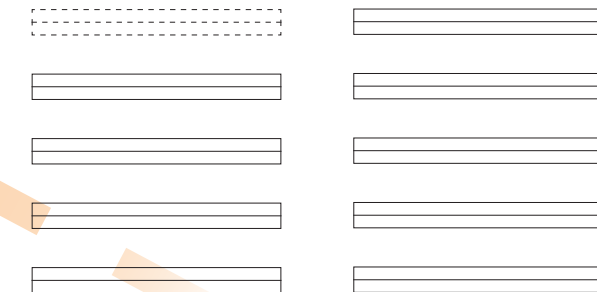
To retain the diversity and breadth of the collection, expand the compact storage system. As a compact storage system can hold 5-6 times more, this will permit a 2 - 4% growth in the size of the collection. Refer to diagram below.

Accessible, well lit stack areas also increase circulation. For example, a 2% increase in checked out materials facilitates 2% more space available on the shelves.

### WHAT IS THE FUTURE OF COLLECTIONS 10 YEARS FROM NOW?



### REDUCE STACK SPACE BY 10% TO CREATE ADDITIONAL GATHERING SPACE



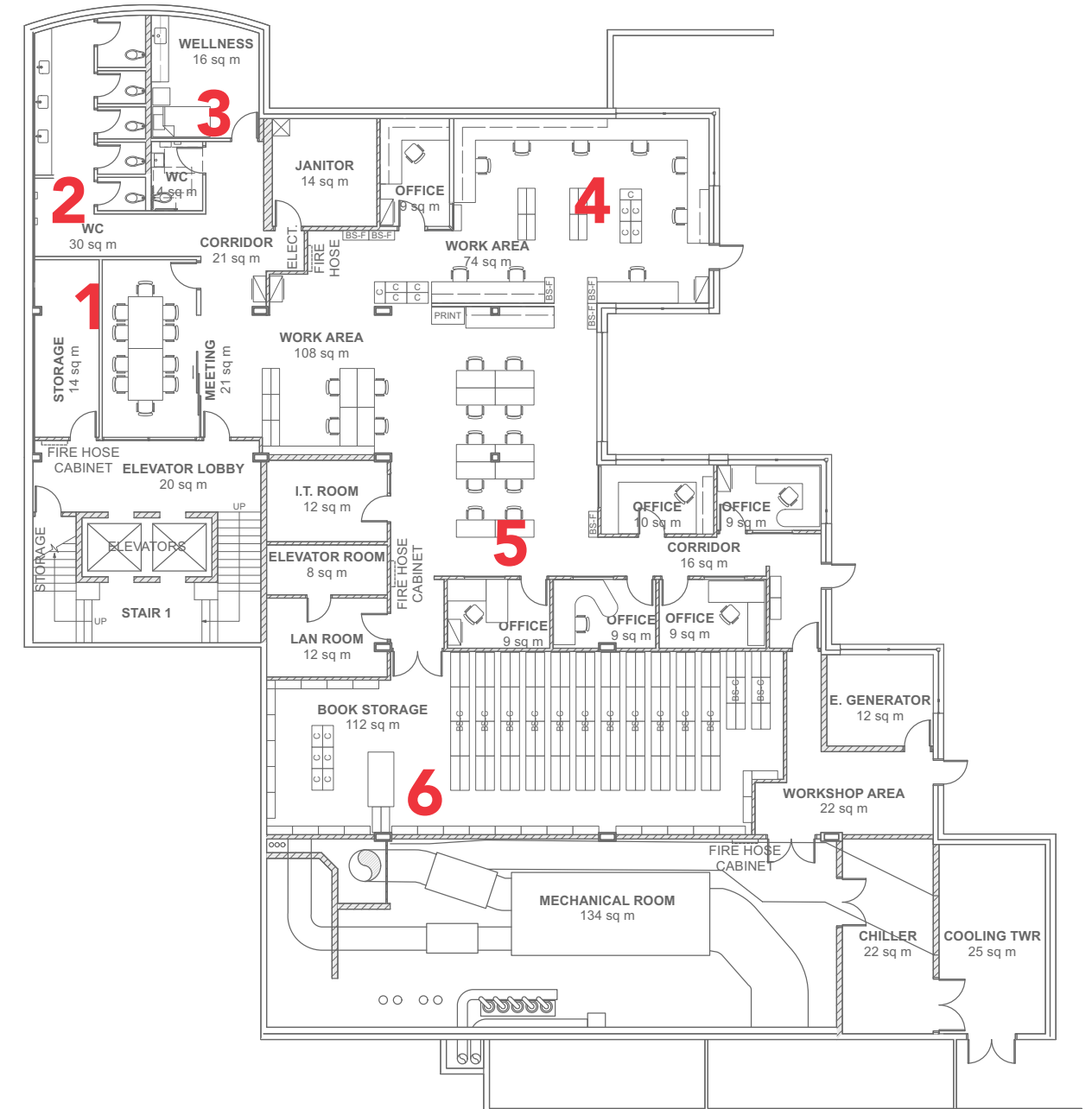
### EXPAND COMPACT STORAGE AREA FOR NET INCREASE IN COLLECTIONS AREA BY 2 - 4%



Create an open flexible office area at the lower level.

**KEY STRATEGIES INCLUDE:**

1. Add a new meeting area with sliding door for large staff meetings.
2. Renovate the washrooms into gender neutral facility.
3. Relocate Wellness room. Janitor's room to stay as is.
4. Create two work-station zones with 10-12 stations, and one new office.
5. Retain existing offices.
6. Reorganize and expand compact storage system.



# ILLUSTRATIVE CONCEPT OPTIONS

Building upon the Key Strategies chapter, two illustrative concept options were developed. The two options shared a similar layout for the Lower Floor Community Computing Centre and the Basement Staff Area. Key features of the differing Main and Upper Levels are summarized below:

## OPTION 1: YOUTH IN THE WEST WING - NATURE AT THE HEART

Youth are relocated in the West Wing bringing energy to the Main Level and using the existing courtyard as an exterior play area.

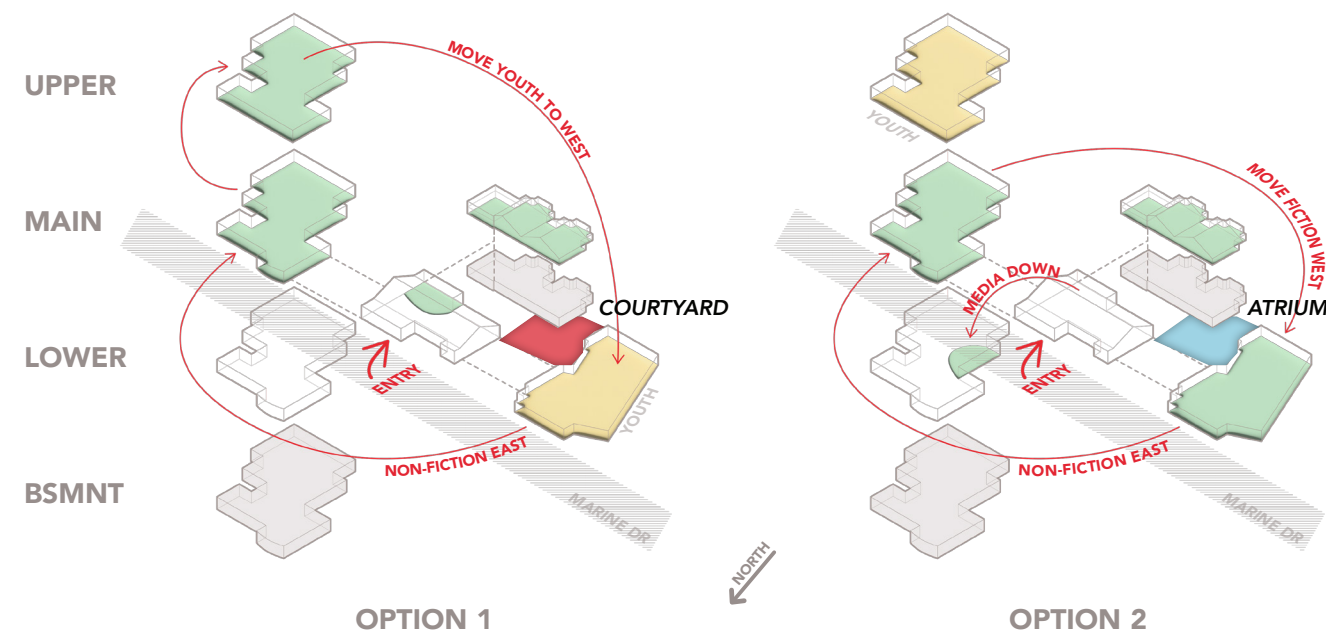
Non-Fiction is relocated, from the West Wing, to the East Wing Main Floor and Adult Fiction is relocated to the East Wing top floor, taking advantage of the natural clerestory light and the acoustic separation.

## OPTION 2: ENCLOSE THE COURTYARD CREATING A VIBRANT HUB

The existing courtyard is enclosed to become a sky-lit Atrium connecting the North Block, South Block Mezzanine and the West Wing.

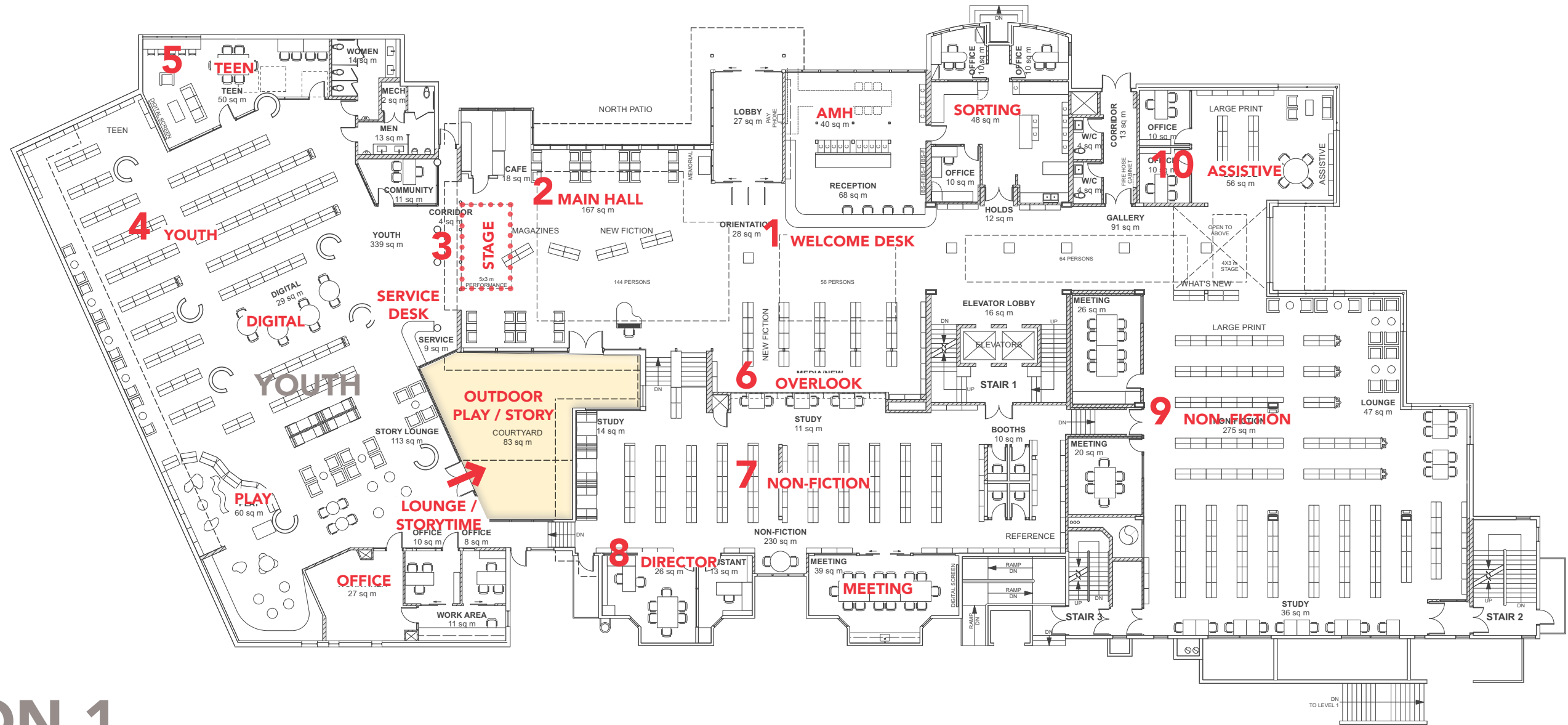
Fiction and Non-Fiction swap locations (from East Wing to West Wing and vice versa) to solidify the atrium as a place of wonder. Youth remain upstairs.

Refer to the following pages for detailed description of all levels.



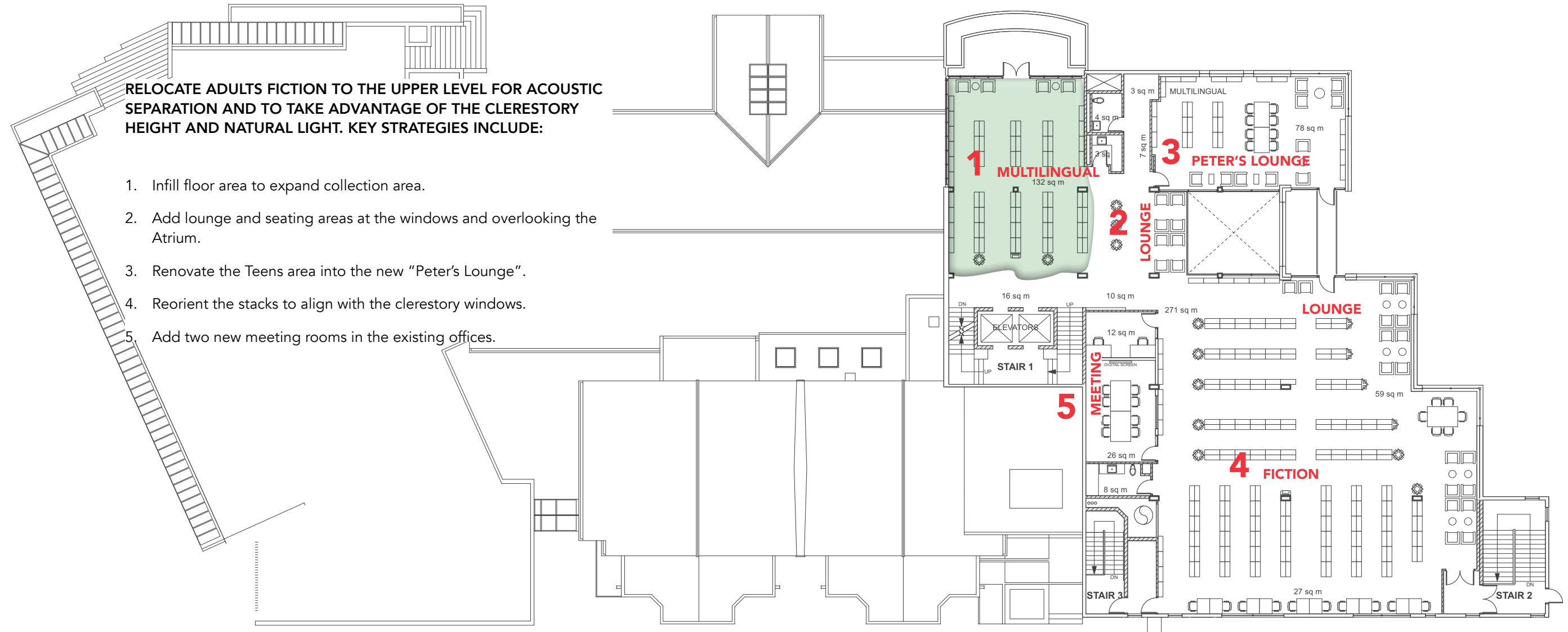
SHOWCASE MULTI-GENERATIONAL ACTIVITIES ON THE MAIN LEVEL THAT GIVE YOUTH DIRECT ACCESS TO NATURE. KEY STRATEGIES INCLUDE:

1. Expand the welcome desk to the south for enhanced visibility and to provide additional space around the AMH.
2. Enhance the living room experience and strengthen connection to the courtyard with new seating and lighting.
3. Relocate the performance area to the west.
4. Relocate Children’s Library to the Main Floor to allow connectivity to the courtyard and include spaces for play based learning.
5. Relocate Teens to the West Block. Add study and meeting space.
6. Refresh the Best Sellers/Media area with new connection to mezzanine overlook above.
7. Renovate the Mezzanine by adding overlook area, lowering stacks and redoing the lighting to enhance modernist space.
8. Relocate Directors Offices and add new Meeting Room in south Mezzanine.
9. Extend Non-Fiction to the east with close connectivity to the meeting rooms.
10. Relocate Accessible Services to Peter’s Room to provide easy access for patrons. Refresh space to include two new offices, lounge and collections.



# OPTION 1

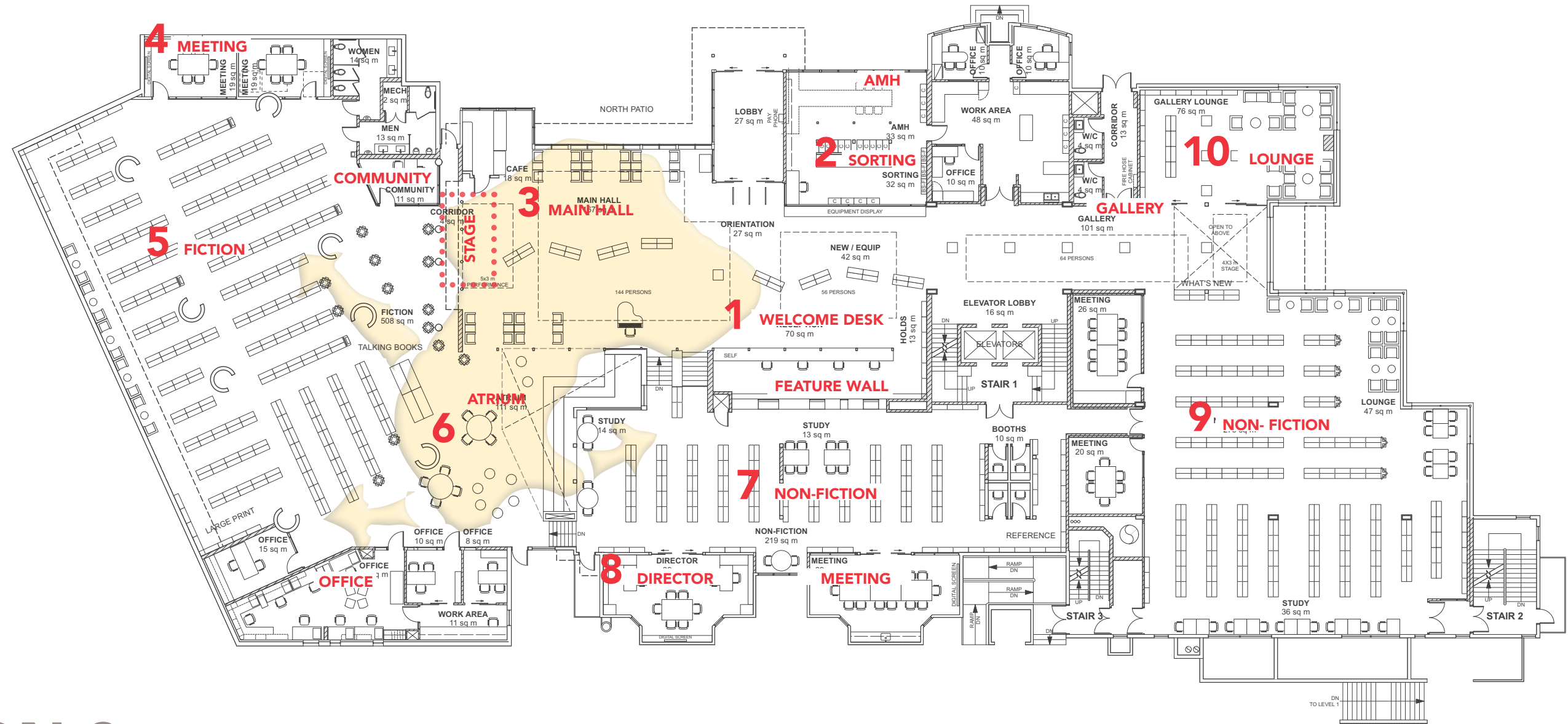
## MAIN LEVEL + MEZZANINE: CHILDREN IN WEST WING OPTION



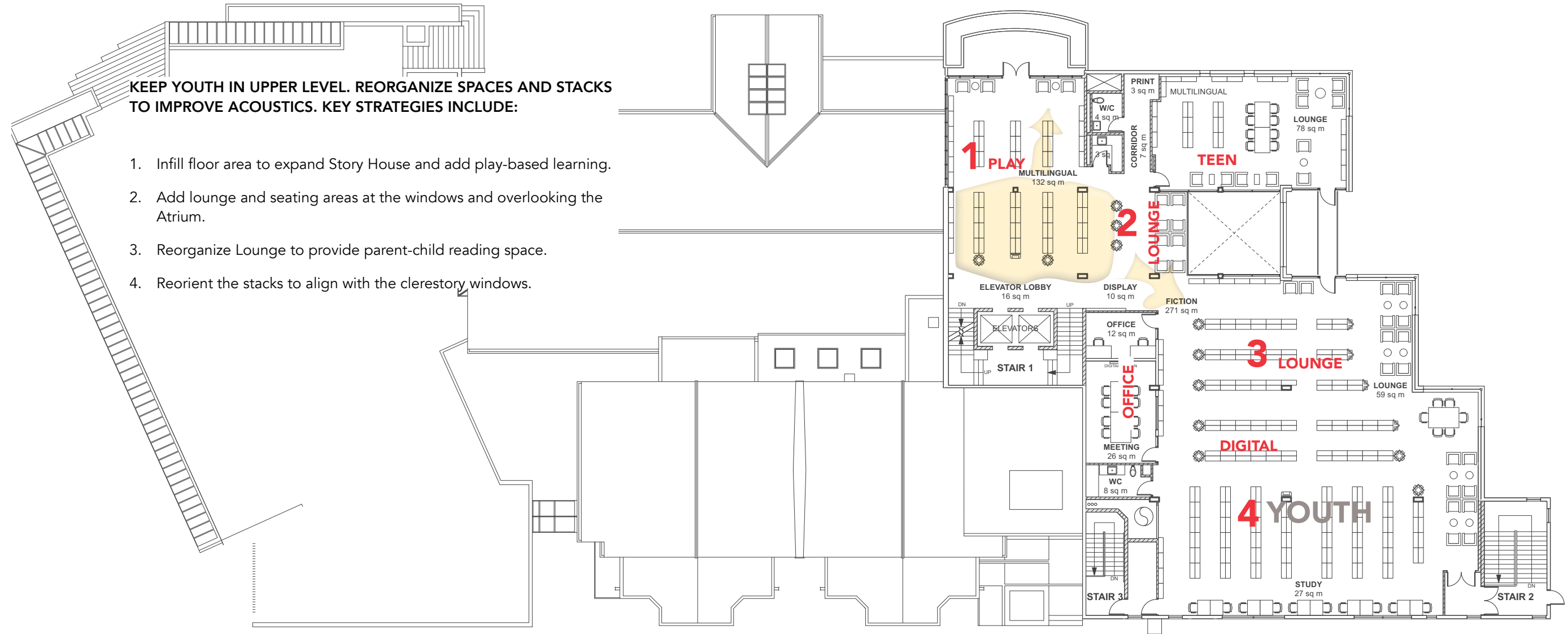
**OPTION 1**  
**UPPER LEVEL:**  
**CHILDREN IN WEST WING OPTION**

TRANSFORM THE MAIN FLOOR INTO A VIBRANT HUB FOR ACTIVITY CENTERED AROUND THE COMMUNITY LIVING ROOM. KEY STRATEGIES INCLUDE:

1. Relocate the Welcome Desk to enhance visibility and connectivity.
2. Expand Sorting area to existing Welcome Desk location.
3. Enhance the living room experience in the Main Hall. Relocate the performance area to the west.
4. Add new Meeting Rooms.
5. Relocate Fiction to facilitate connection to the Atrium.
6. Create the "Atrium" – enclosing the courtyard with a glass roof and adding bleachers to connect to the mezzanine.
7. Enhance mezzanine by creating a feature wall with views to the Main Hall and additional seating.
8. Relocate Directors Offices and add new Meeting Room in south Mezzanine.
9. Relocate Non-Fiction to enhance acoustic separation. Include study areas by east and south windows.
10. Enhance the Gallery and expand into the existing Lounge.



**OPTION 2**  
**MAIN LEVEL + MEZZANINE:**  
**ENCLOSED COURTYARD OPTION**



**KEEP YOUTH IN UPPER LEVEL. REORGANIZE SPACES AND STACKS TO IMPROVE ACOUSTICS. KEY STRATEGIES INCLUDE:**

1. Infill floor area to expand Story House and add play-based learning.
2. Add lounge and seating areas at the windows and overlooking the Atrium.
3. Reorganize Lounge to provide parent-child reading space.
4. Reorient the stacks to align with the clerestory windows.

**OPTION 2**  
**UPPER LEVEL:**  
**ENCLOSED COURTYARD OPTION**

## MEETING THE VISION

	OPTION 1	OPTION 2
<b>1. Enhance the Main Hall:</b>	Opens to the Courtyard, connects the children to the courtyard to encourage use. The mezzanine is opened up to overlook the entry area.	New sky-lit Atrium connects the North Block, West Wing and the Mezzanine. The mezzanine is opened up to overlook the new Atrium.
<b>2. Support the Youth:</b>	Youth area is relocated to the ground floor to allow easy access for families and connect to the Courtyard. Include play-based learning space.	Youth area is expanded through the infill over the Gallery area. New area includes play-based learning space.
<b>3. Inhabit the mezzanine:</b>	Increase visibility through lower stacks, overlook to the North Block, adding booths and locating meeting room and Director's office on the Mezzanine.	Increase visibility through lower stacks, overlook to the Atrium, adding booths and locating meeting room and Director's office on the Mezzanine.
<b>4. Rethink Collections:</b>	Lower stacks to increase visibility and add compact storage. Relocate Adults Fiction to upper floor East Wing. Youth area is expanded in West Wing.	Lower stacks to increase visibility and add compact storage. Relocate Adults Fiction to West Wing connecting to the Atrium.
<b>5. Provide a variety of flexible collaborative/study spaces:</b>	Meeting Rooms distributed throughout. Add booths at Digital Level and the Mezzanine.	Meeting Rooms distributed throughout. Add booths at Digital Level and the Mezzanine.
<b>6. Recreate the Community Computing Centre:</b>	Lower Level renovated to create a new Community Computing Centre combined with new Welsh Hall.	Lower Level renovated to create a new Community Computing Centre combined with new Welsh Hall.
<b>7. Relocate the Welsh Hall:</b>	Relocate the Welsh Hall to the east with views to the east. Add foyer with sliding doors facilitating expansion.	Relocate the Welsh Hall to the east with views to the east. Add foyer with sliding doors facilitating expansion.
<b>8. Weave Indigenous design throughout the Library:</b>	WVML to meet with the representatives from the Squamish Nation to review opportunities throughout the Library.	WVML to meet with the representatives from the Squamish Nation to review opportunities throughout the Library.
<b>9. Increase Staff Efficiency:</b>	Welcome Desk is expanded slightly to the south to create more space around the AMH. Lower Level staff room is expanded and office and support spaces reconfigured.	Welcome Desk is relocated to south side of the North Block creating lots of room around AMH. Lower Level staff room is expanded and office and support spaces reconfigured.