

Scanning 35mm Film Strips using Epson Scan V800/V850 Pro

Table of Contents

<i>I. Material</i>	2
<i>II. Launch the Scanner</i>	2
<i>III. Start Scanning</i>	4
<i>IV. Scan in Full Auto Mode:</i>	5
<i>V. Scan in Home Mode:</i>	6
<i>V.I Select Your Scans in Home Mode</i>	6
<i>VI. Scan in Professional Mode:</i>	10
<i>VI.I Selecting Your Scans in Professional Mode</i>	11

I. Material

For your digitization project, you will need to borrow:

- Epson Perfection V800 Slide Holder OR Epson Perfection V850 Pro Scanner
- Epson Perfection V800 Film Holder (35mm Film Strips)
- Epson Accessories

II. Launch the Scanner

1.



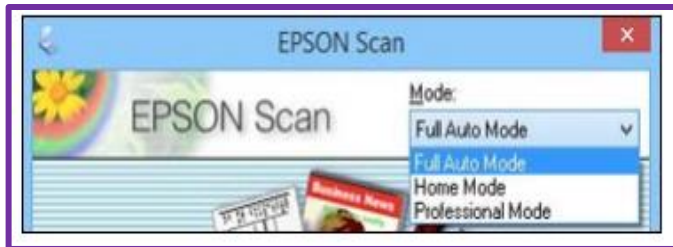
Press **Power** to turn on the scanner. It is in the bottom left corner. A green light will come on.

2.



Double click on the **Epson Software icon** on the desktop. Select **Epson V800/V850** from the list that pops up.

3.



Choose a **Mode** from the list in the top right corner of the Epson Scan window.

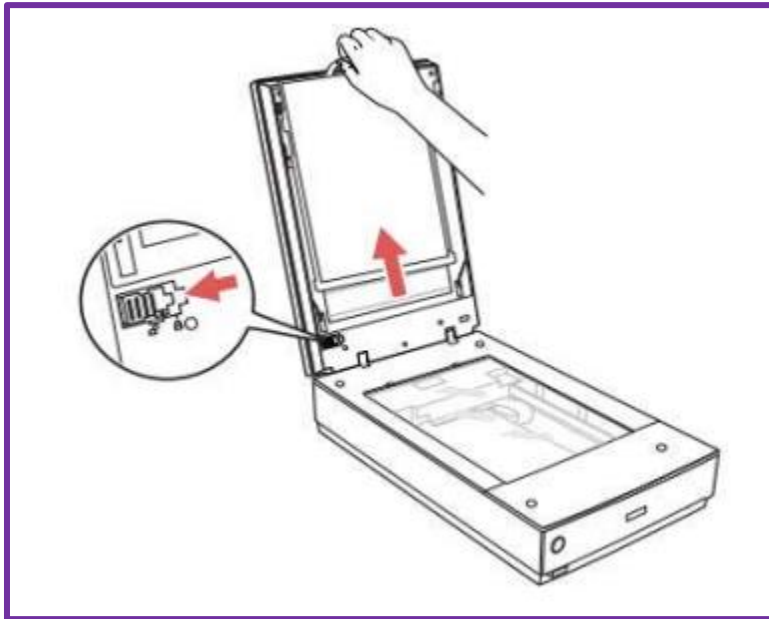
Full Auto Mode: The easiest way to scan. The program will automatically choose the best settings for your scan.

Home Mode: This mode offers more choice. You can select some settings such as scan, preview, and size options.

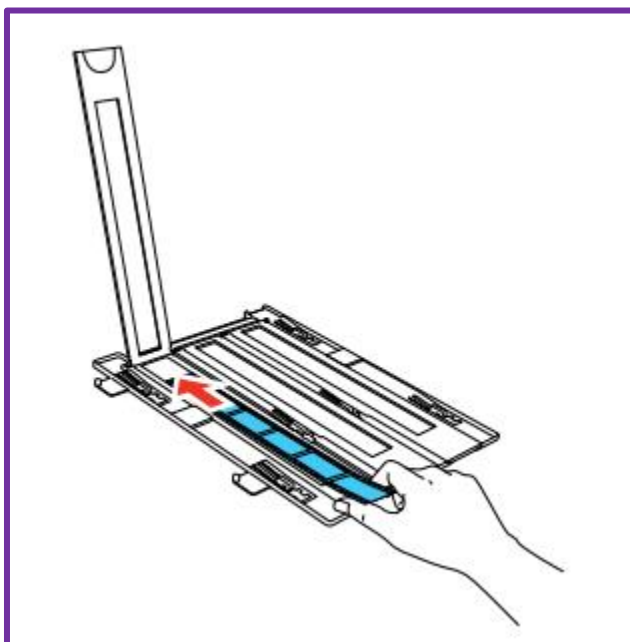
Professional Mode: This mode offers full control. You can choose all settings, previews, and size options for your scanned image.

III. Start Scanning

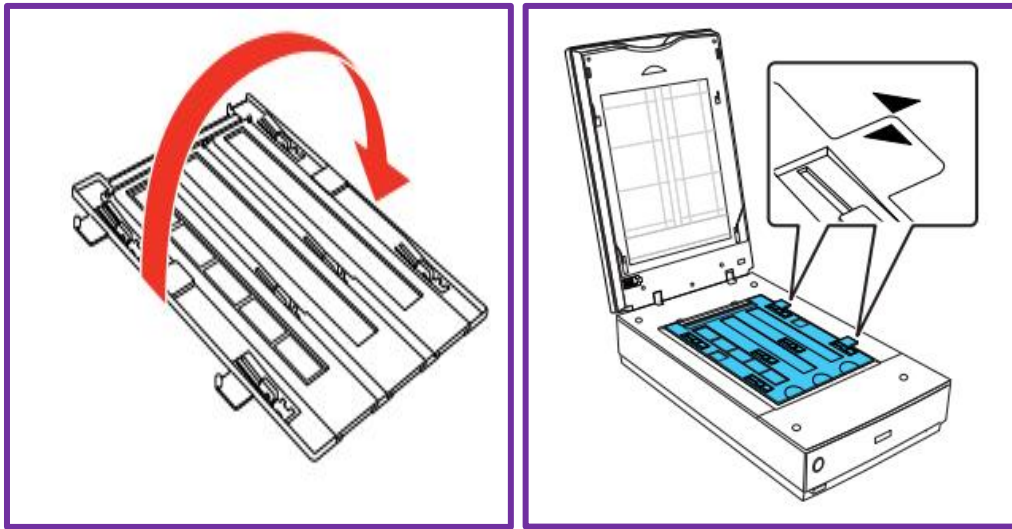
1. Open the scanner cover and remove the white document mat (on the inside cover) by pulling up on the handle. Close the Scanner Cover.



2. Put your negatives into the holder. Place them shiny side up. Close the holder cover and press it down until it clicks into place.

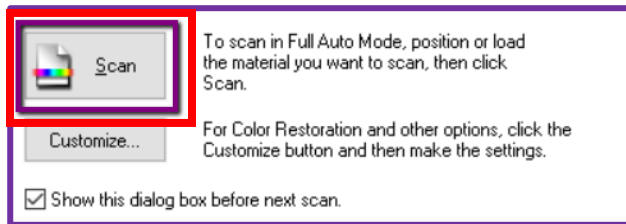


- Turn the holder over and place on the scanner glass. Line up the arrows on the holder with the arrows on the scanner, and make the pegs sit in the holes. There is no need to push down.

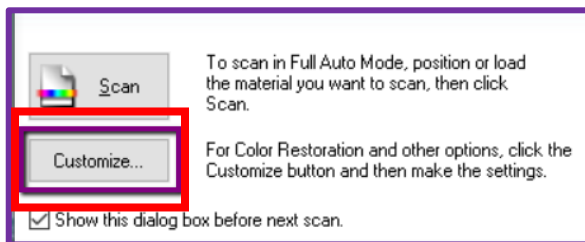


- Close the scanner lid.

IV. Scan in Full Auto Mode:



Click Scan.

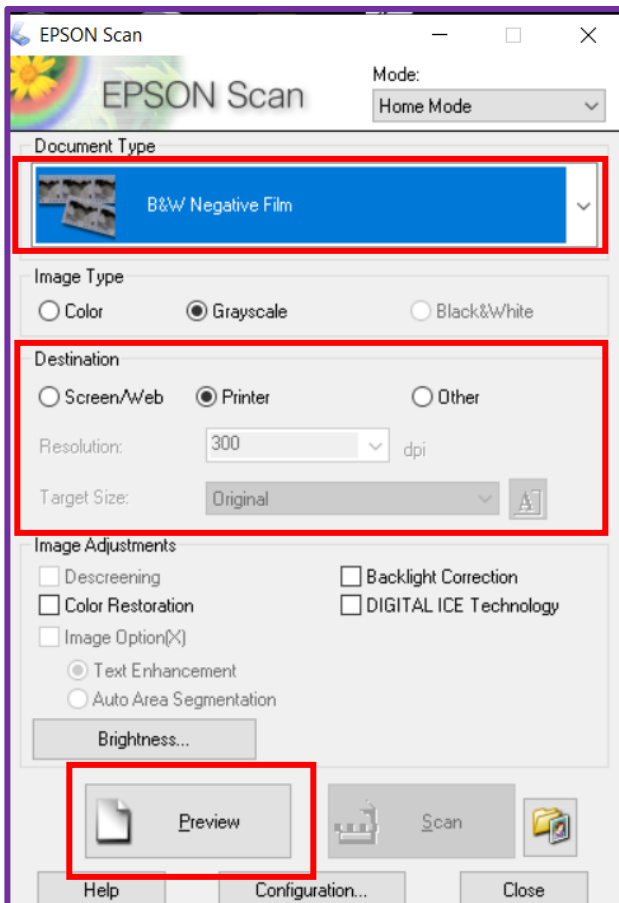


Optional: You can click **Customize** to choose where a scan saves on the computer, or to change the scan quality (resolution).

1. The scanner will automatically see how many photos are in the scanner and save each as an individual image.
2. When the scan is finished, the Epson scan window will automatically close and open the folder where your photos are saved on your computer.

NOTE: If your scans are upside down, you can change this later using the Photos Application.

V. Scan in Home Mode:



Click here and choose **B&W Negative Film, Positive Film, or Colour Negative Film**

Choose how you would like to use your scan, or choose **Other** and set the quality of your scan manually. **Printer** is higher quality than **Screen/Web**.

Click **Preview**.

V.I Select Your Scans in Home Mode

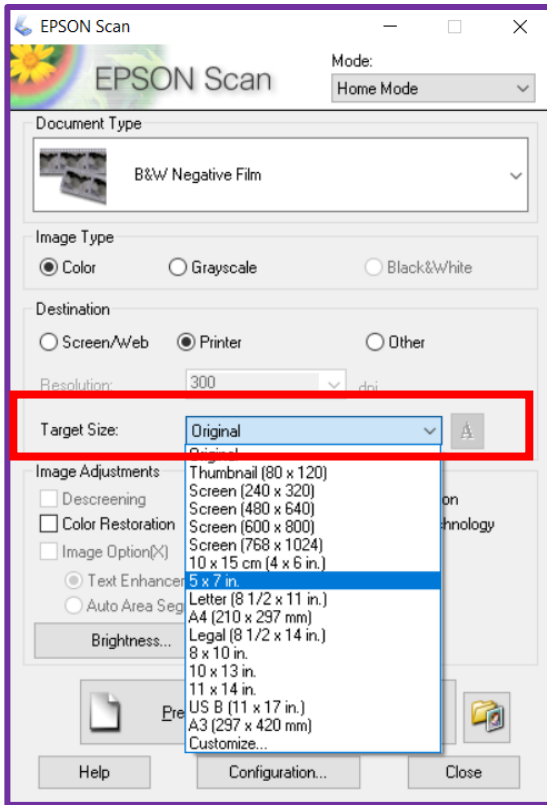
The software will automatically find the negatives you put in the holder. The scanner will automatically choose a target size for them. If you want to change these selections, you can do so in two ways:



Click on the scan you wish to make selections on. A solid blue line will surround it. You can only work on one scan at a time.

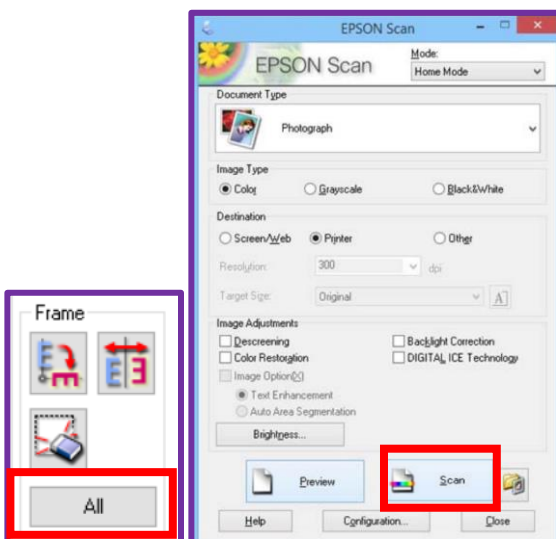


Hold your mouse in the top left corner of your selected scan. A + sign will appear. Left click and hold while dragging diagonally to the bottom right corner. A dotted line will surround your scan.



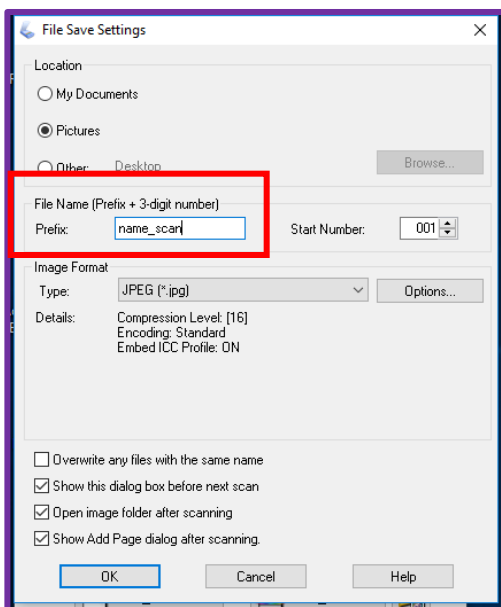
Click on the **down arrow** and then choose a target size from the list.

A dotted line will appear on the scan you have selected, in the dimensions you have chosen. You can move the dotted line around your scan; some parts may be cut off to fit your scan into the target size.



Click **All** to select all of your scans.

When you have everything selected, click **Scan**.



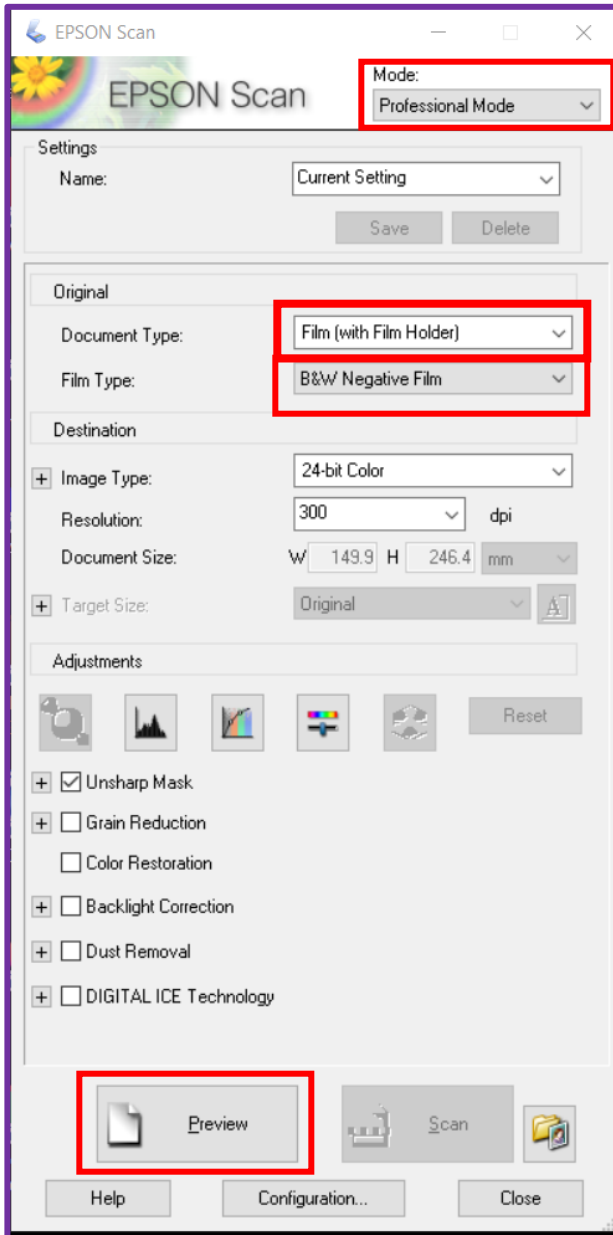
The **File Save Settings** window will pop up.

Choose where you would like to save your scans

Name your scans.

Click **OK**.

VI. Scan in Professional Mode:



Choose **Professional Mode** here.

Choose **Film (with Film Holder)** here.

Choose **B&W Negative Film, Colour Negative Film, or Positive Film** here.

Click Preview.
A preview window will appear.

VI.I Selecting Your Scans in Professional Mode

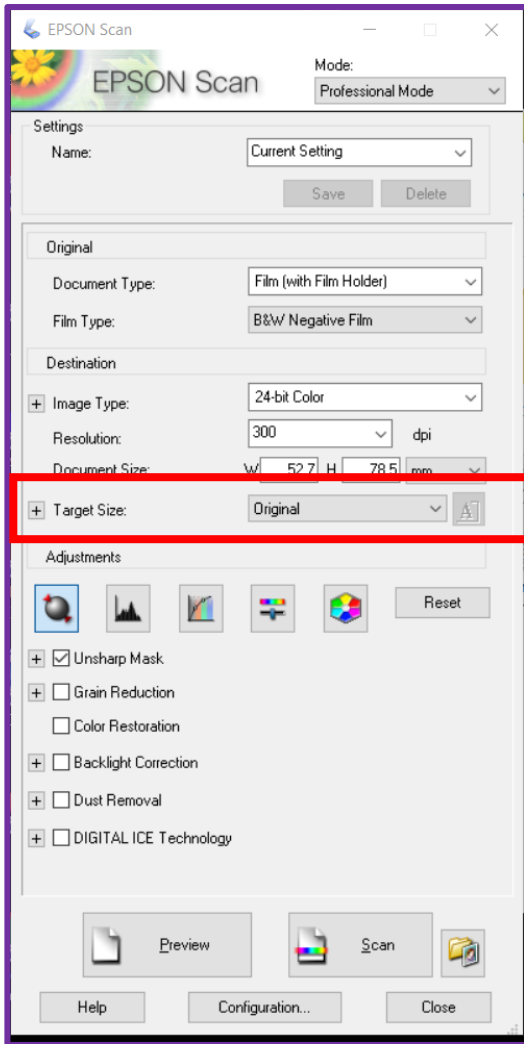
1. The scanner will automatically find the pictures you put in the negative holder. You can make selections within these scans in two ways:



Click on the scan you wish to make selections on. A solid blue line will surround it. You can only work on one scan at a time.



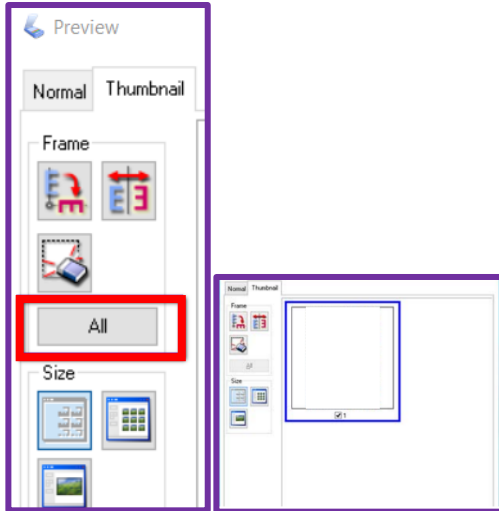
Hold your mouse in the top left corner of your selected scan. A + sign will appear. Left click and hold while dragging diagonally to the bottom right corner. A dotted line will surround your scan.



Click on the **down arrow** and then choose a target size from the list.

A dotted line will appear on the scan you have selected, in the dimensions you have chosen. You can move the dotted line around your scan; some parts may be cut off to fit your scan into the target size.

2. Once you have selected the areas you want to scan, choose which of the previews you would like to make a final scan of. You can do this in two ways:

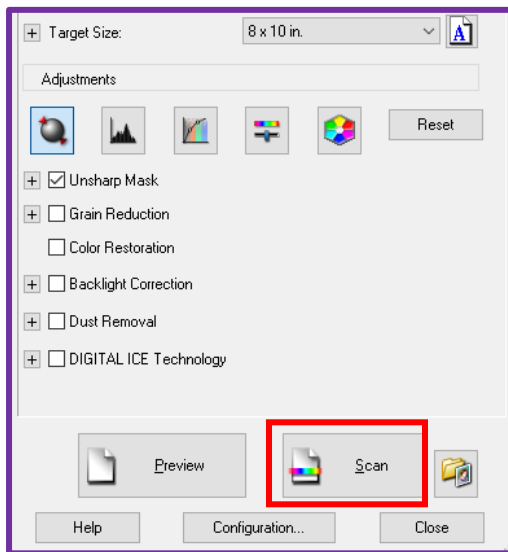


If you want to scan all your images, choose **All** from the side menu in the Preview window.

Any adjustments you make will be applied to all the images.

Or, **select the individual photos** by left-clicking on them and following the below steps for each image.

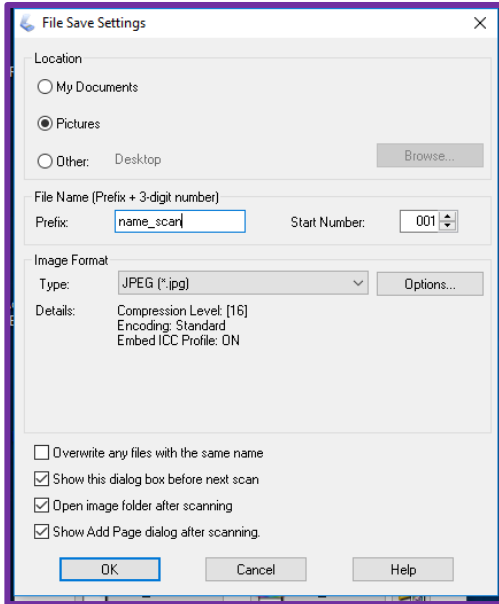
3. During the selection process, you can choose to make adjustments to the colour or quality of your scan.



Make optional adjustments to your scans here. Any scan that is selected will show the changes you make.

When everything looks good, click **Scan**.

4. The **File Save Settings** menu will appear.



The **File Save Settings** window will pop up.
Choose where you would like to save your scans.

Type what you would like your scans to be called.

Click **OK**.

5. When the scan is finished, close the Preview Window. If you would like to scan another batch, repeat the process, and if you are finished close the Epson software.